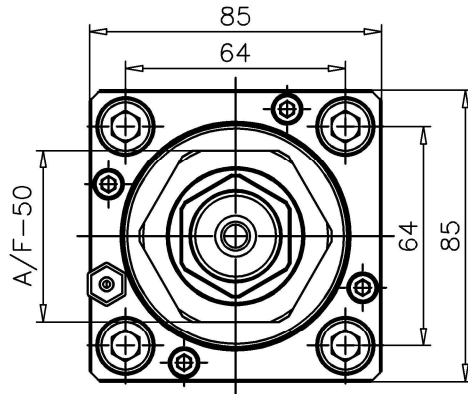
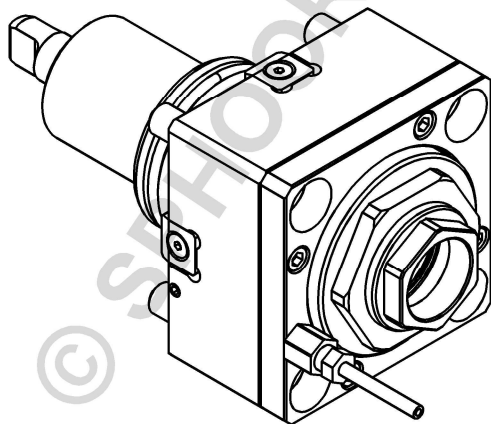
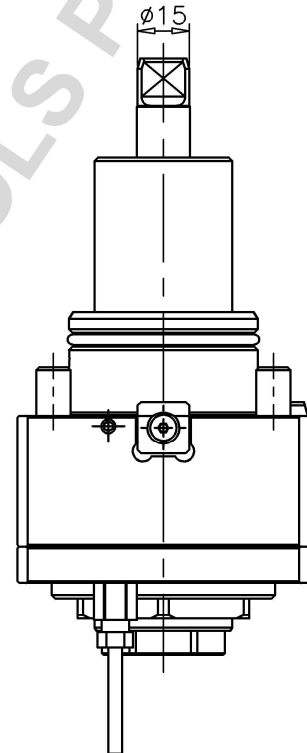
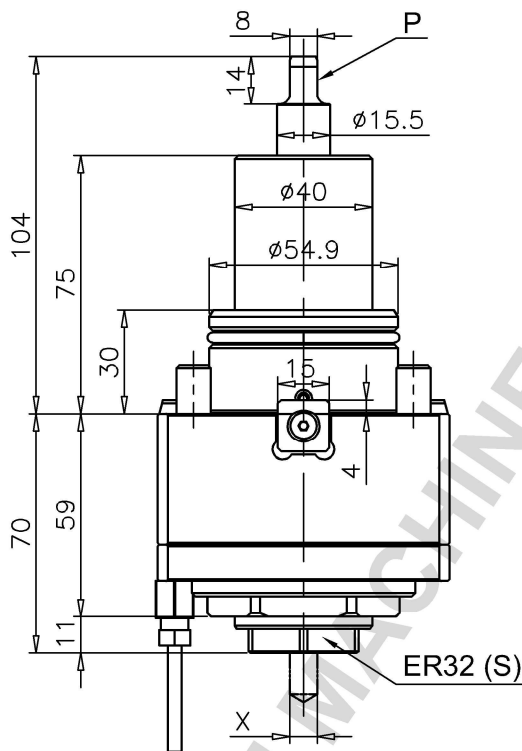


DRILLING AND MILLING HEAD,  
AXIAL 0°, ER32, INTERNAL & EXTERNAL COOLANT SUPPLY



- NOTE:**  
 1. INTERNAL COOLANT=70BAR MAX  
 (FOLLOW OPERATING DATA CHART)  
 2. NO DRY RUN IS ALLOWED  
 3. COOLANT FILTRATION 30 $\mu$  (MAX60 $\mu$ )  
 4. COLLET IS NOT INCLUDED



**TECHNICAL SPECIFICATIONS**

ITEM ID	SD7176
ITEM DESCRIPTION	B55-ATH-ER32-DIN1809 INT NUT-TC
COUPLING TYPE (P)	DIN1809-Ø15X8X14
RATIO	1:1
INPUT RPM	Max 6000 RPM
OUTPUT RPM	Max 6000 RPM
OUTPUT TORQUE	70 N-m
DIRECTION OF ROTATION	INPUT=OUTPUT
COLLET (S)	ER32 (DIN6499)
COLLET RANGE (X)	Ø2-Ø20
MASS OF TOOL HOLDER	3.1 Kgs
MACHINE MAKE	DOOSAN

Scale  
1:2  
Size  
A4

Title

B55-ATH-ER32-DIN1809 INT NUT-TC

Drawn

by

SATHISH

Approved

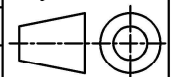
R.R.K

Projection

date

11-04-24

11-04-24



**SPHOORTI**

SPHOORTI MACHINE TOOLS PVT LTD  
BANGALORE-560058

DRAWING NO:

**SD7176**

No. of Sheets 01

Sheet No. 01