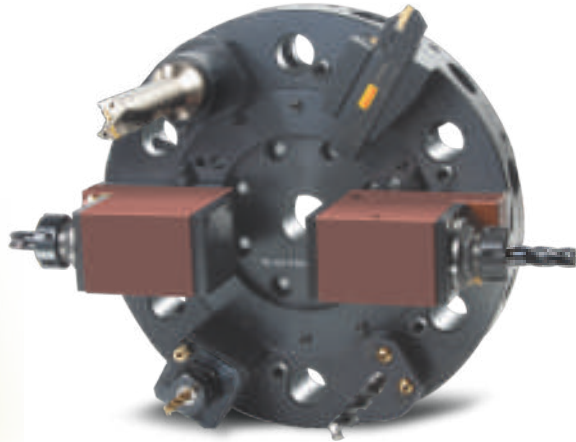


SPHOORTI

Precision Assured



VDI TOOL DISCS & TOOL HOLDERS

FOR CNC TURNING CENTER & TURN MILL CENTER

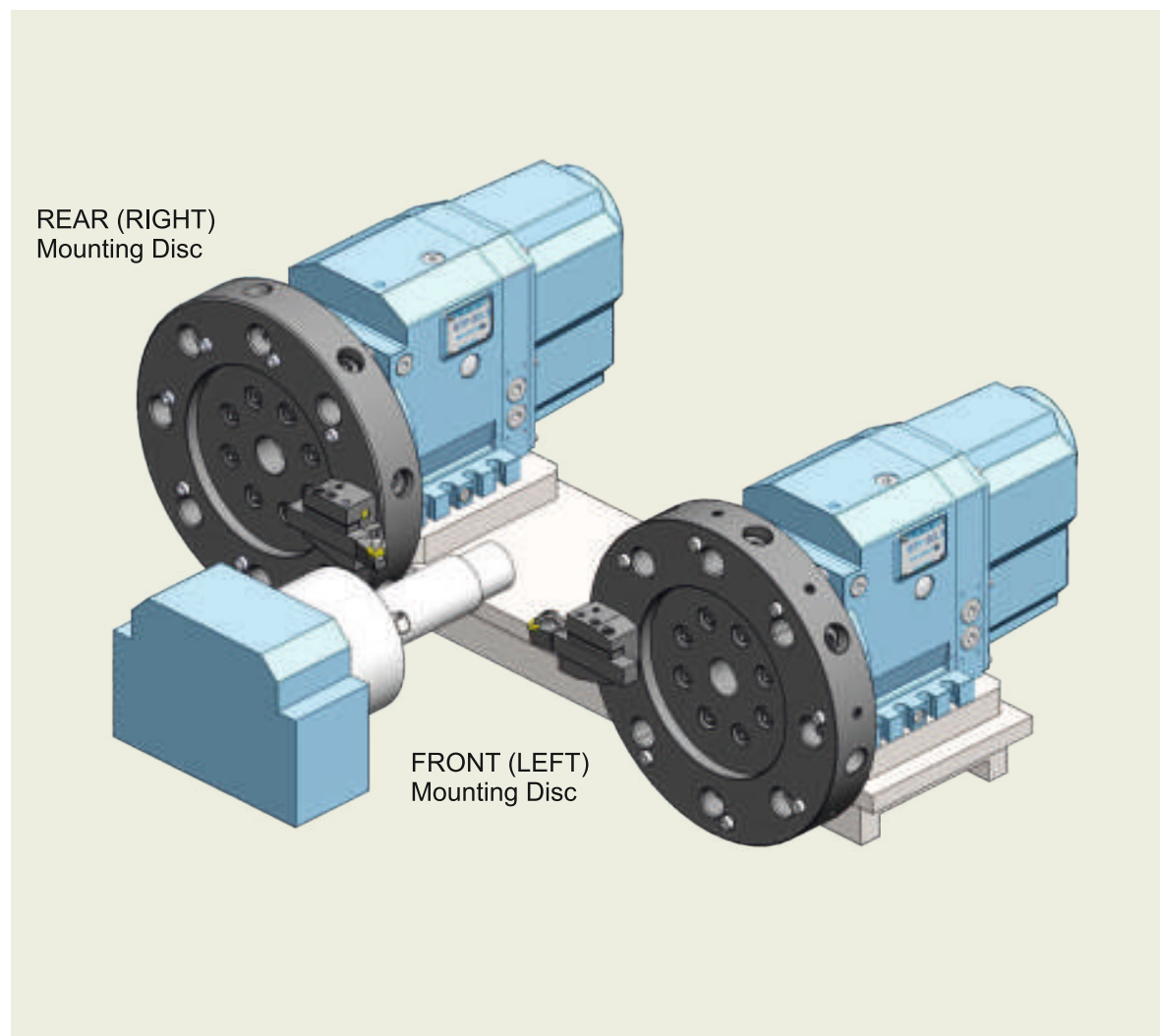


January 2017

FEATURES

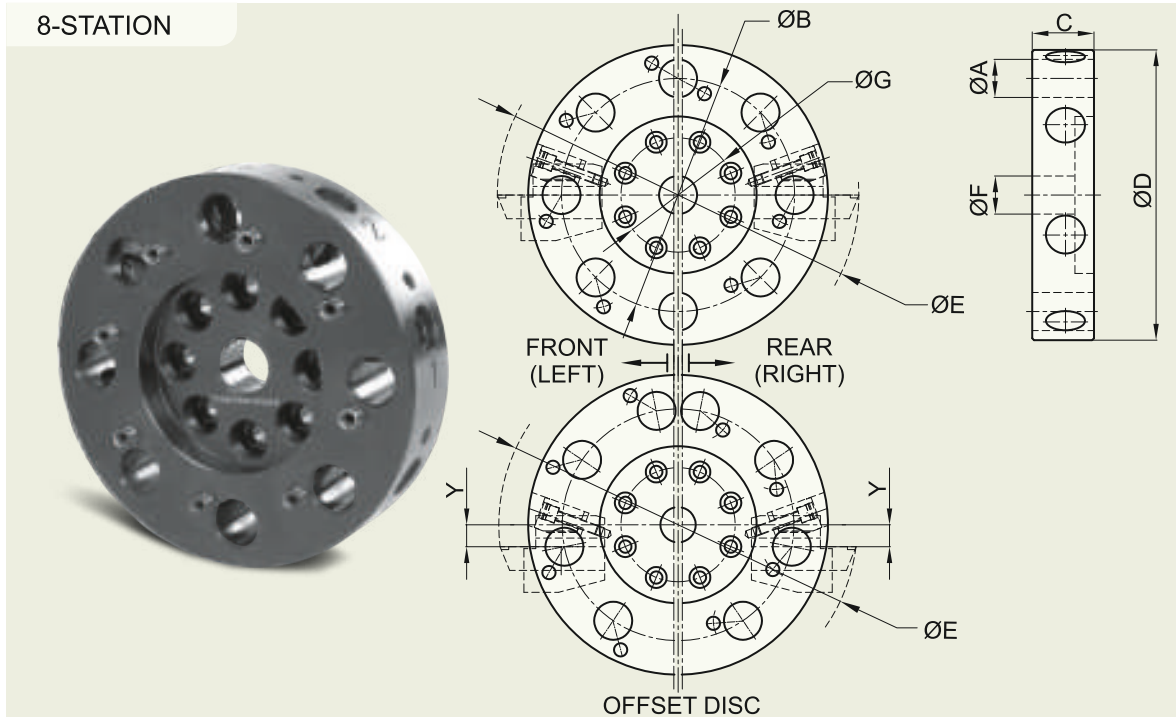
- Available in 8 & 12 Station as our standard.
- Made out of Forged, Medium Carbon Steel & Toughened to 20 ± 2 HRC.
- Finish machining on precision machining centers to ensure accuracies.
- Suitable for fitment on both flat and slant bed CNC lathes.
- Available in Right version (Rear Mounting) & Left version (Front Mounting).
- Suitable for fitment on Pragati, Diplomatic, Sauter & Baruffaldi turrets.
- Customised design can be supplied upon request.

TOOL DISC MOUNTING POSITION



VDI TOOL DISCS - AXIAL - STATIC TOOLS

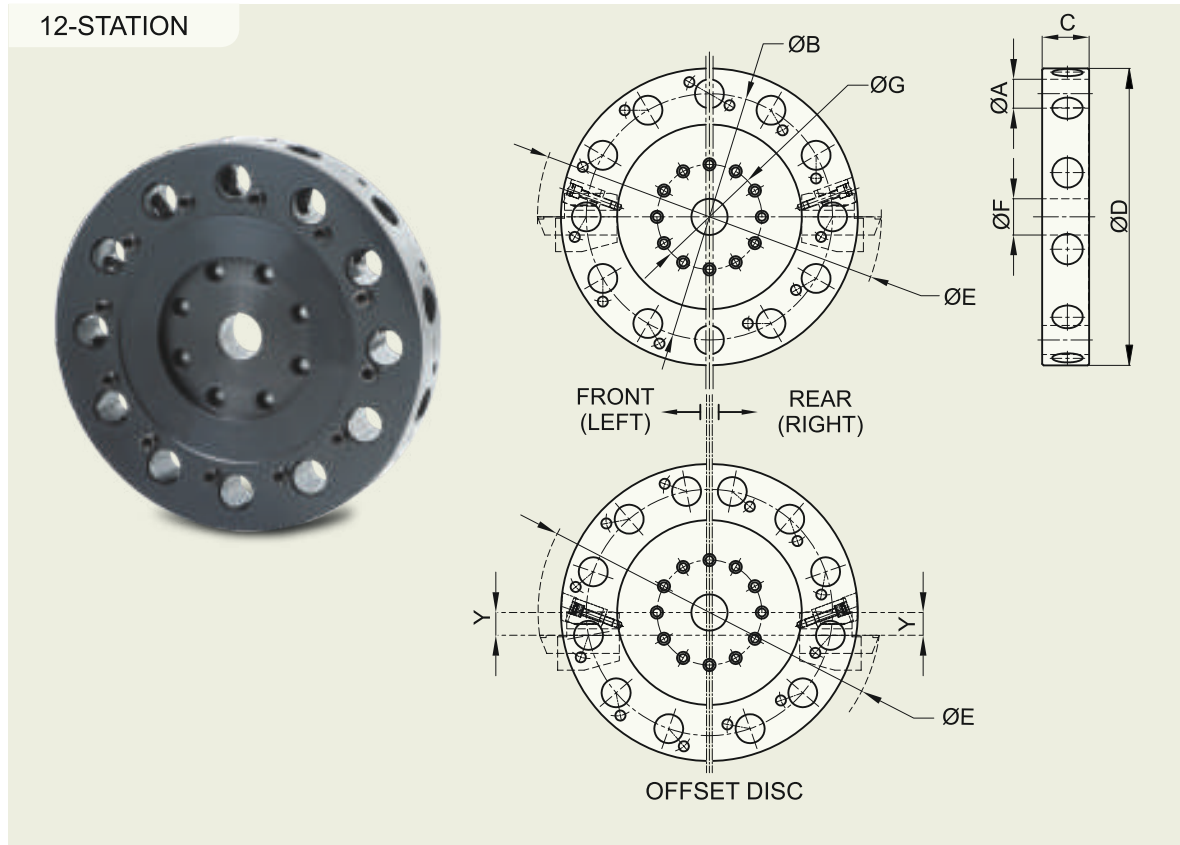
8-STATION



CODE	ØA (VDI)	ØB	C	ØD	~ØE	ØF	ØG	Y	TURRET TYPE
TD-VDI-S-50-8-16-160	16	160	34	200	230	25	70	-	PRAGATI BTP-50, Duplomatic-BSV-N-100
TD-VDI-S-50-8-20-140	20	140	42	185	235	25	70	-	Baruffaldi - TOE-100, Sauter 05-480-510
TD-VDI-S-63-8-20-200	20	200	42	245	294	30	90	-	PRAGATI BTP-63 Duplomatic-BSV-N-120 Baruffaldi - TOE-120 Sauter 05-480-512
TD-VDI-S-63-8-20-200-17	20	200	42	245	292	30	90	17	
TD-VDI-S-63-8-20-209-12	20	209	42	264	303	30	90	12	
TD-VDI-S-63-8-20-240	20	240	42	295	332	30	90	-	
TD-VDI-S-63-8-20-240-17	20	240	42	295	331	30	90	17	
TD-VDI-S-63-8-30-190	30	190	57	250	300	30	90	-	
TD-VDI-S-63-8-30-200	30	200	57	260	310	30	90	-	
TD-VDI-S-63-8-30-200-15	30	200	57	260	308	30	90	15	
TD-VDI-S-63-8-30-220	30	220	57	270	330	30	90	-	
TD-VDI-S-63-8-30-210	30	210	57	270	310	40	120	-	
TD-VDI-S-80-8-30-210-25	30	210	57	285	308	40	120	25	PRAGATI BTP-80 Duplomatic-BSV-N-160 Baruffaldi - TOE-160 Sauter 05-480-516
TD-VDI-S-80-8-30-240	30	240	57	310	350	40	120	-	
TD-VDI-S-80-8-30-240-25	30	240	57	310	348	40	120	25	
TD-VDI-S-80-8-30-270	30	270	57	340	380	40	120	-	
TD-VDI-S-80-8-30-270-25	30	270	57	340	378	40	120	25	
TD-VDI-S-80-8-40-245	40	245	65	310	380	40	120	-	
TD-VDI-S-80-8-40-245-25	40	245	65	320	378	40	120	25	PRAGATI BTP-100 Duplomatic-BSV-N-200 Baruffaldi - TOE-200 Sauter 05-480-520
TD-VDI-S-100-8-40-272	40	272	65	340	407	50	145	-	
TD-VDI-S-100-8-40-272-32	40	272	65	340	405	50	145	32	
TD-VDI-S-100-8-40-275-25	40	275	65	345	408	50	145	25	
TD-VDI-S-100-8-40-290	40	290	65	370	425	50	145	-	
TD-VDI-S-100-8-40-290-32	40	290	65	370	422	50	145	32	
TD-VDI-S-100-8-40-340	40	340	65	410	475	50	145	-	
TD-VDI-S-100-8-40-340-32	40	340	65	410	473	50	145	32	
TD-VDI-S-125-8-50-340	50	340	80	420	495	63	182	-	PRAGATI BTP-125 Duplomatic-BSV-N-250 Baruffaldi - TOE-250 Sauter 05-480-525
TD-VDI-S-125-8-50-340-35	50	340	80	430	492	63	182	35	
TD-VDI-S-125-8-50-400	50	400	80	480	564	63	182	-	
TD-VDI-S-125-8-50-400-35	50	400	80	480	561	63	182	35	PRAGATI BTP-160, Duplomatic-BSV-N-320 Baruffaldi - TOE-320, Sauter 05-480-532
TD-VDI-S-160-8-60-460	60	460	96	560	649	80	220	-	
TD-VDI-S-160-8-60-460-40	60	460	96	560	645	80	220	40	

VDI TOOL DISCS - AXIAL - STATIC TOOLS

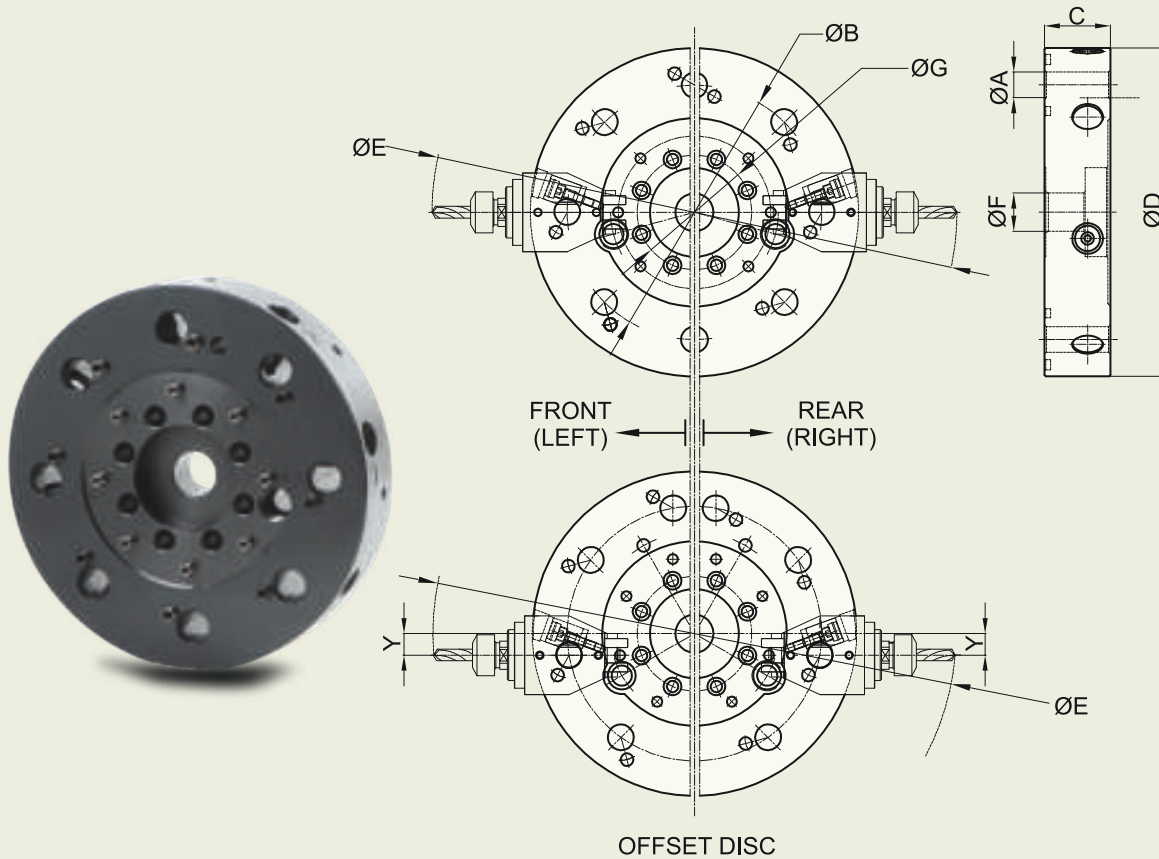
12-STATION



CODE	ØA (VDI)	ØB	C	ØD	~ØE	ØF	ØG	Y	TURRET TYPE
TD-VDI-S-50-12-16-160	16	160	34	200	230	25	70	-	PRAGATI BTP-50 Diplomatic-BSV-N-100 Baruffaldi - TOE-100 Sauter 05-480-510
TD-VDI-S-63-12-20-200	20	200	42	250	292	30	90	-	PRAGATI BTP-63 Diplomatic-BSV-N-120 Baruffaldi - TOE-120 Sauter 05-480-512
TD-VDI-S-63-12-20-200-17	20	200	42	250	290	30	90	17	
TD-VDI-S-63-12-20-209-12	20	209	42	264	301	30	90	12	
TD-VDI-S-63-12-20-240	20	240	42	295	332	30	90	-	
TD-VDI-S-63-12-20-240-17	20	240	42	295	330	30	90	17	
TD-VDI-S-80-12-20-290	20	290	45	345	382	40	120	-	PRAGATI BTP-80 Diplomatic-BSV-N-160 Baruffaldi - TOE-160 Sauter 05-480-516
TD-VDI-S-80-12-30-270	30	270	57	340	380	40	120	-	
TD-VDI-S-80-12-30-270-25	30	270	57	340	378	40	120	25	
TD-VDI-S-80-12-30-315	30	315	57	380	425	40	120	-	PRAGATI BTP-100 Diplomatic-BSV-N-200 Baruffaldi - TOE-200 Sauter 05-480-520
TD-VDI-S-100-12-30-340	30	340	57	400	450	50	145	-	
TD-VDI-S-100-12-30-370	30	370	57	430	480	50	145	-	
TD-VDI-S-100-12-40-340	40	340	65	410	475	50	145	-	
TD-VDI-S-100-12-40-340-32	40	340	65	410	472	50	145	32	
TD-VDI-S-100-12-40-340-55	40	340	65	410	471	50	145	55	
TD-VDI-S-100-12-40-370	40	370	65	440	505	50	145	-	PRAGATI BTP-125 Diplomatic-BSV-N-250 Baruffaldi - TOE-250 Sauter 05-480-525
TD-VDI-S-125-12-50-400	50	400	80	480	564	63	182	-	
TD-VDI-S-125-12-50-400-35	50	400	80	480	561	63	182	35	
TD-VDI-S-160-12-60-460	60	460	96	560	649	80	220	-	PRAGATI BTP-160 Diplomatic-BSV-N-320 Baruffaldi - TOE-320 Sauter 05-480-532
TD-VDI-S-160-12-60-460-40	60	460	96	560	645	80	220	40	

VDI TOOL DISCS - AXIAL - DRIVEN TOOLS AS PER DIN 5480 / 5482

8-STATION



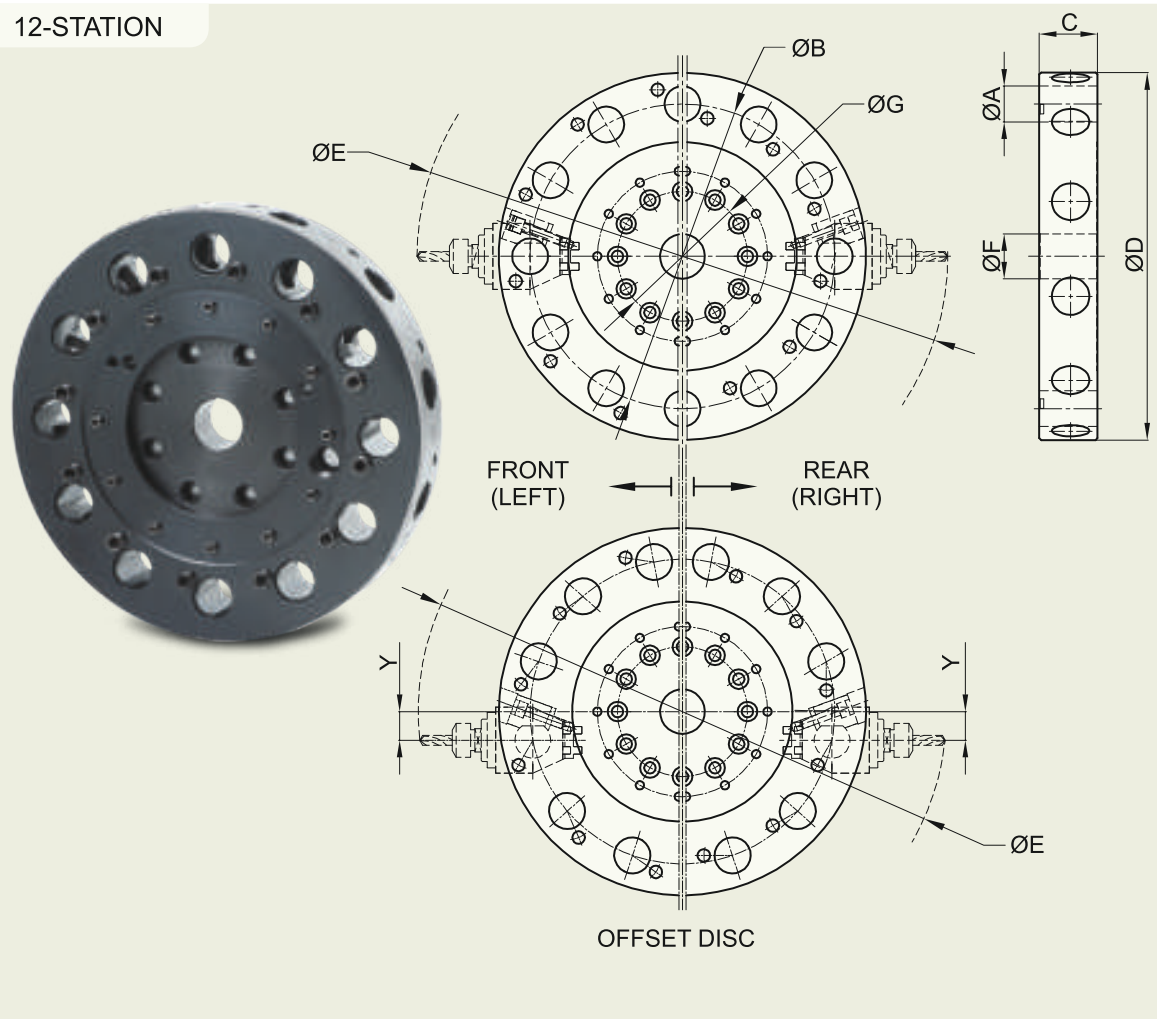
DIN 5480									
CODE	ØA (VDI)	ØB	C	ØD	~ØE	ØF	ØG	Y	TURRET TYPE
TD-VDI-R-63-8-20-200-D80	20	200	52	258	390	30	90	-	PRAGATI DTT 63-8-200-0
TD-VDI-R-80-8-30-240-D80	30	240	67	310	537	40	120	-	PRAGATI DTT 80-8-240-0
TD-VDI-R-80-8-30-240-25-D80	30	240	67	310	534	40	120	25	PRAGATI DTT 80-8-240-25
TD-VDI-R-100-8-40-340-D80	40	340	76	410	680	50	145	-	PRAGATI DTT 100-8-340-0
TD-VDI-R-100-8-40-340-32-D80	40	340	76	410	677	50	145	32	PRAGATI DTT 100-8-340-32

DIN 5482									
CODE	ØA (VDI)	ØB	C	ØD	~ØE	ØF	ØG	Y	TURRET TYPE
TD-VDI-R-80-8-30-240-D82	30	240	56	310	537	40	120	-	PRAGATI DTT 80-8-240-0
TD-VDI-R-80-8-30-240-25-D82	30	240	56	310	534	40	120	25	PRAGATI DTT 80-8-240-25
TD-VDI-R-100-8-40-340-D82	40	340	64	410	680	50	145	-	PRAGATI DTT 100-8-340-0
TD-VDI-R-100-8-40-340-32-D82	40	340	64	410	677	50	145	32	PRAGATI DTT 100-8-340-32

*Driven Tool Discs can be supplied as per customer drawings

VDI TOOL DISCS - AXIAL - DRIVEN TOOLS AS PER DIN 5480 / 5482

12-STATION



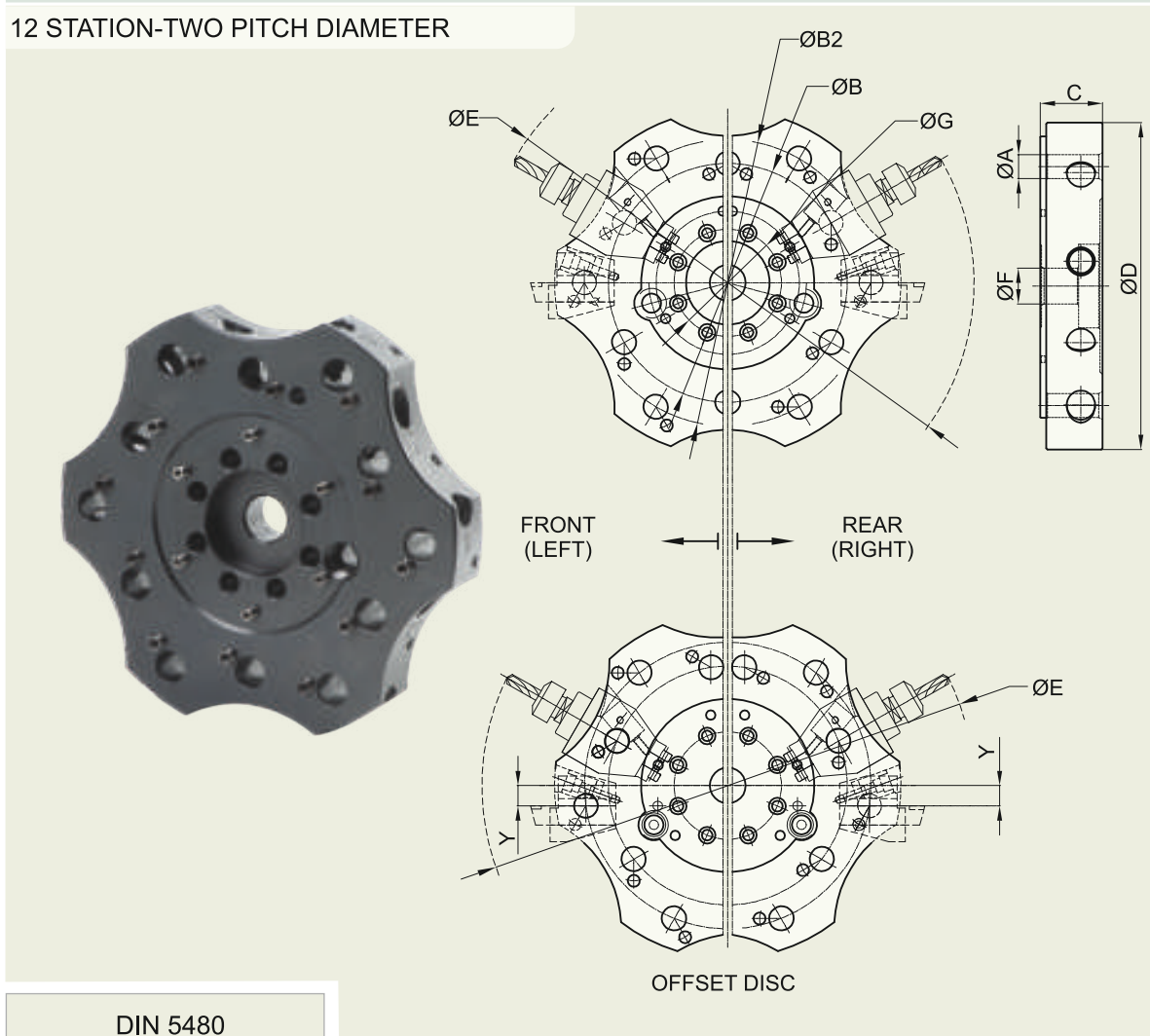
DIN 5480									
CODE	ØA (VDI)	ØB	C	ØD	~ØE	ØF	ØG	Y	TURRET TYPE
TD-VDI-R-63-12-20-240-D80	20	240	52	298	430	30	90	-	PRAGATI DTT 63-12-240-0
TD-VDI-R-80-12-30-270-D80	30	270	67	340	567	40	120	-	PRAGATI DTT 80-12-270-0
TD-VDI-R-80-12-30-270-25-D80	30	270	67	340	564	40	120	25	PRAGATI DTT 80-12-270-25
TD-VDI-R-100-12-40-370-D80	40	370	76	440	710	50	145	-	PRAGATI DTT 100-12-370-0
TD-VDI-R-100-12-40-370-32-D80	40	370	76	440	707	50	145	32	PRAGATI DTT 100-12-370-32

DIN 5482									
CODE	ØA (VDI)	ØB	C	ØD	~ØE	ØF	ØG	Y	TURRET TYPE
TD-VDI-R-80-12-30-270-D82	30	270	56	340	567	40	120	-	PRAGATI DTT 80-12-270-0
TD-VDI-R-80-12-30-270-25-D82	30	270	56	340	564	40	120	25	PRAGATI DTT 80-12-270-25
TD-VDI-R-100-12-40-370-D82	40	370	64	440	710	50	145	-	PRAGATI DTT 100-12-370-0
TD-VDI-R-100-12-40-370-32-D82	40	370	64	440	707	50	145	32	PRAGATI DTT 100-12-370-32

*Driven Tool Discs can be supplied as per customer drawings

VDI TOOL DISCS - AXIAL - DRIVEN TOOLS AS PER DIN 5480 / 5482

12 STATION-TWO PITCH DIAMETER



DIN 5480

CODE	ØA (VDI)	ØB	ØB2	C	ØD	~ØE	ØF	ØG	Y	TURRET TYPE
TD-VDI-R-63-12-20-200-240-2-D80	20	200	240	52	290	390	30	90	-	PRAGATI DTT 63-12-200-240-0

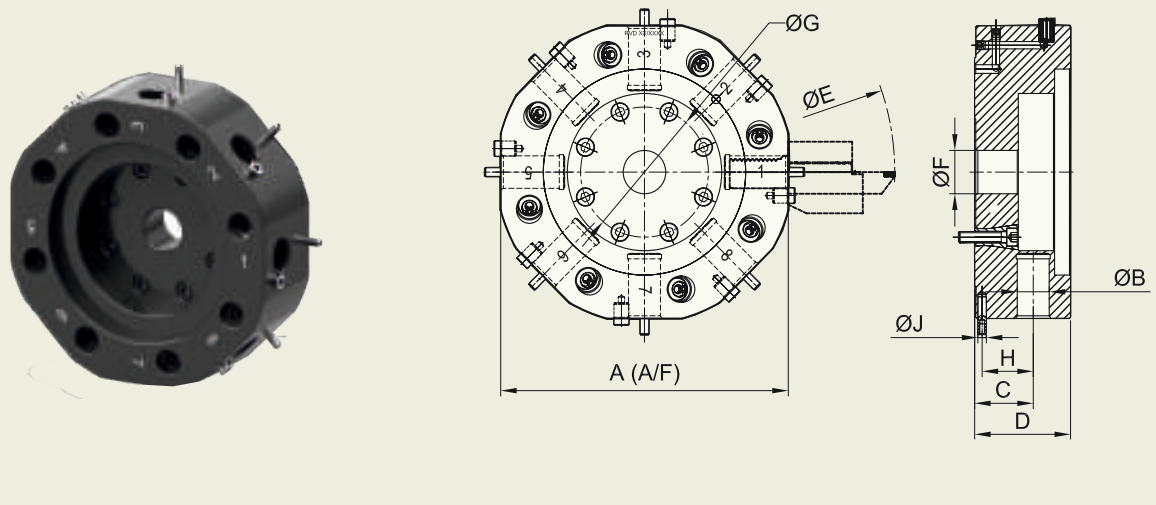
DIN 5482

CODE	ØA (VDI)	ØB	ØB2	C	ØD	~ØE	ØF	ØG	Y	TURRET TYPE
TD-VDI-R-80-12-30-240-308-2-D82	30	240	308	59	368	537	40	120	-	PRAGATI DTT 80-12-240-308-0
TD-VDI-R-80-12-30-240-308-25-2-D82	30	240	308	59	368	534	40	120	25	PRAGATI DTT 80-12-240-308-25
TD-VDI-R-100-12-40-340-400-2-D82	40	340	400	67	470	680	50	145	-	PRAGATI DTT 100-12-340-400-0
TD-VDI-R-100-12-40-340-400-32-2-D82	40	340	400	67	470	677	50	145	32	PRAGATI DTT 100-12-340-400-32
TD-VDI-R-100-12-40-370-400-2-D82	40	370	400	67	470	668	50	145	-	PRAGATI DTT 100-12-370-400-0
TD-VDI-R-100-12-40-370-400-32-2-D82	40	370	400	67	470	665	50	145	32	PRAGATI DTT 100-12-370-400-32

*Inner Pitch Circle Diameter ØB for Driven Tools and Outer Pitch Circle Diameter ØB2 for Static Tools
*Driven Tool Discs can be supplied as per customer drawings

VDI TOOL DISC - RADIAL - STATIC TOOLS

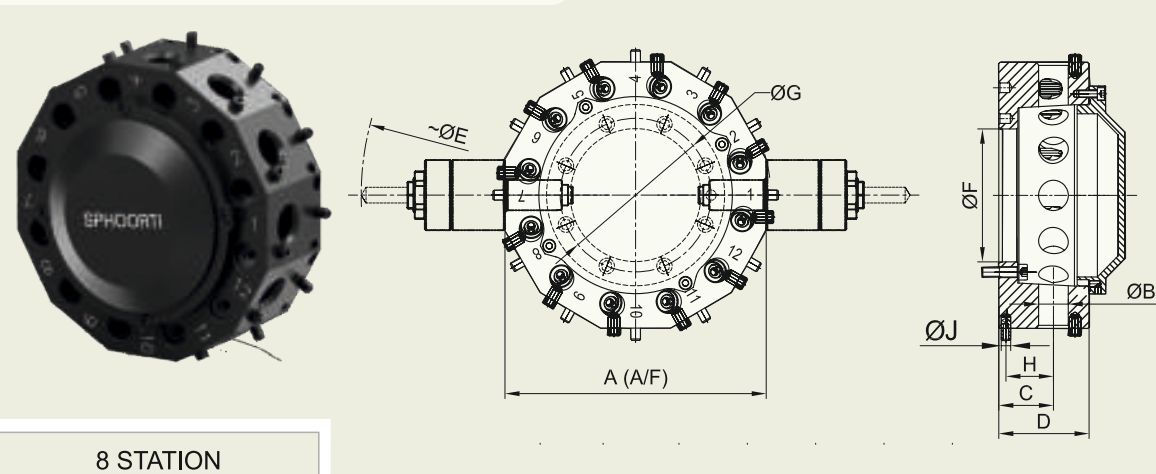
8-STATION



CODE	A (A/F)	ØB (VDI)	C	D	~ØE	ØF	ØG	H	ØJ	TURRET TYPE
TD-VDI-S-RTD-80-8-30-270	270	30	55	90	470	40	120	48	8	PRAGATI BTP-80, Diplomatic-BSV-N-160 Baruffaldi - TOE-160, Sauter 05-480-516
TD-VDI-S-RTD-100-8-40-320	320	40	65	109	570	50	145	56	10	PRAGATI BTP-100, Diplomatic-BSV-N-200 Baruffaldi - TOE-200, Sauter 05-480-520

SINGLE MOTOR TURRET DISC - RADIAL - DRIVEN TOOLS AS PER DIN 5480

8 STATION / 12 STATION / 16 STATION

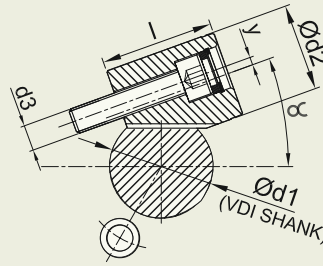


8 STATION										
CODE	A (A/F)	ØB (VDI)	C	D	~ØE	ØF	ØG	H	ØJ	TURRET TYPE
TD-VDI-SMT63R-8-25-220-D80	220	25	46	76	396	110	127	40	8	PRAGATI SMT-63R-8
TD-VDI-SMT80R-8-30-270-D80	270	30	55	90	595	130	150	48	8	PRAGATI SMT-80R-8
TD-VDI-SMT100R-8-40-320-D80	320	40	74	140	726	168	187	56	10	PRAGATI SMT-100R-8
12 STATION										
TD-VDI-SMT63R-12-25-220-D80	220	25	46	76	396	110	127	40	8	PRAGATI SMT-63R-12
TD-VDI-SMT80R-12-30-270-D80	270	30	55	90	595	130	150	48	8	PRAGATI SMT-80R-12
TD-VDI-SMT100R-12-40-320-D80	320	40	74	140	726	168	187	56	10	PRAGATI SMT-100R-12
16 STATION										
TD-VDI-SMT80R-16-30-340-D80	340	30	55	90	665	130	150	48	8	PRAGATI SMT-80R-16

* RTD & SMT can be supplied as per customer drawings.

VDI ECCENTRIC CLAMPS (VEC) FOR STATIC TOOL DISCS

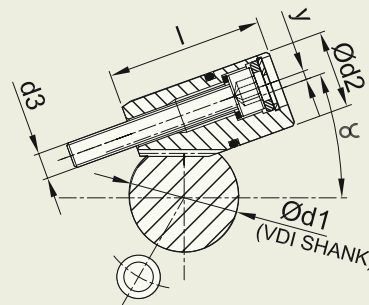
LOCKING CLAMPS



CODE	Ød1 (VDI SHANK)	Ød2	l	y	d3	α
VEC 20	16/20/25	20	25	2	M6	20°
VEC 22	30	22	34	2	M8	20°
VEC 26	30	26	32	3	M8	20°
VEC 28	40	28	42	3	M10	20°
VEC 30	40	30	42	3	M10	20°
VEC 34	40	34	44	3	M10	20°
VEC 44	50/60	44	50	3	M12	25°

VDI ECCENTRIC CLAMPS WITH O-RINGS (VECWO) FOR DRIVEN TOOL DISCS

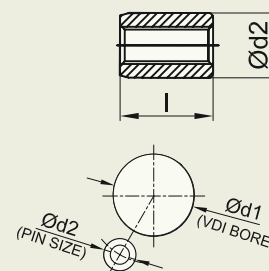
LOCKING CLAMPS



CODE	Ød1 (VDI SHANK)	Ød2	l	y	d3	α
VECWO 18	20/25	18	25	2	M6	20°
VECWO 22	30	22	34	2	M8	20°
VECWO 26	40	26	37	3	M8	20°
VECWO 28	40	28	40	3	M10	20°

ORIENTATION PINS (OP)

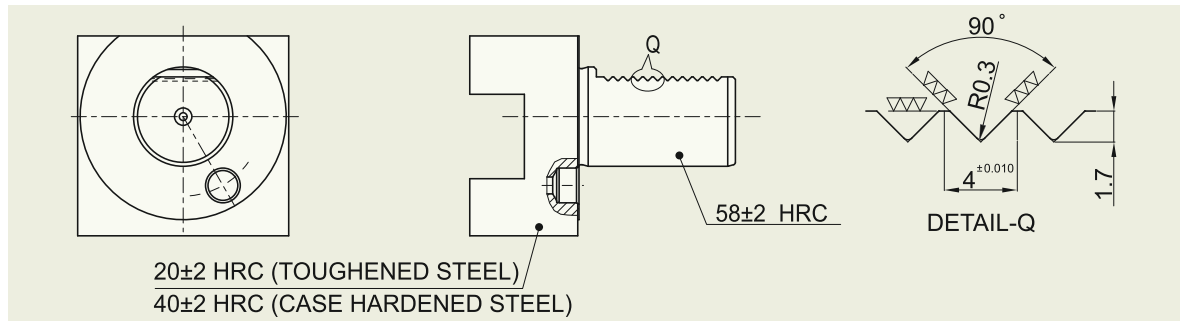
CODE	Ød1 (VDI BORE)	Ød2 (PIN SIZE)	l
OP 8X18	16	8	18
OP 10X22	20	9.99	22
OP 10X15	25	9.99	15
OP 14X20	30/40	13.94	20
OP 16X22	50/60	15.9	22



• Customised Locking Clamps Can be given upon request

VDI TECHNOLOGY

The VDI system is a quick change clamping systems for each tool holder within the tool disc. Tool changes can therefore be performed within seconds, rather than minutes as with the traditional block system.

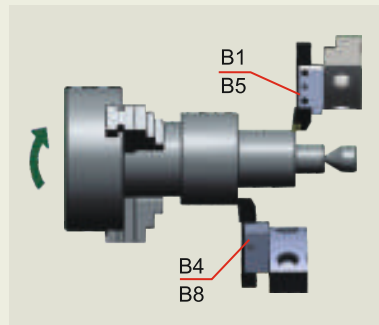


FEATURES

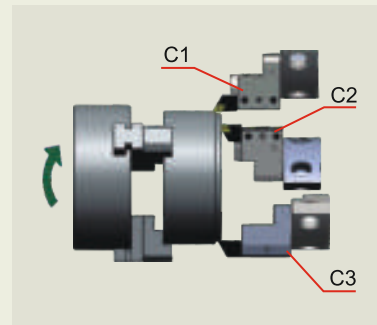
- VDI tool holders are made as per DIN 69880.
- Tool holders are made by toughened steel C-45 as well as case hardened steel 20MnCr5.
- Our standard supply will be in toughened steel C-45 for form A, B, C, D, E1, E2 & Z varieties.
- Case hardened steel 20MnCr5 for form E4 & F varieties.
- Our standard tool holders are fully blackened.
- Shank white, teeth white, tool holder seating surface white will be given on request.
- The tool holder shank portion are heat treated to 58±2 HRC, and the teeth are ground.

SELECTION OF VDI TOOL HOLDERS

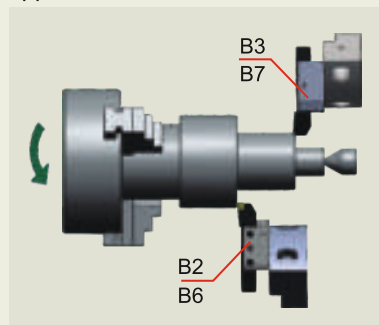
Spindle Rotation clockwise
application of OD Turn and Face



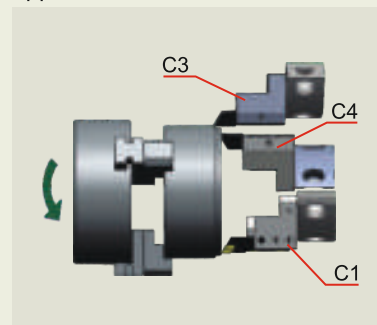
Spindle Rotation clockwise
application of Face and ID Bore



Spindle Rotation Anticlockwise
application of OD Turn and Face

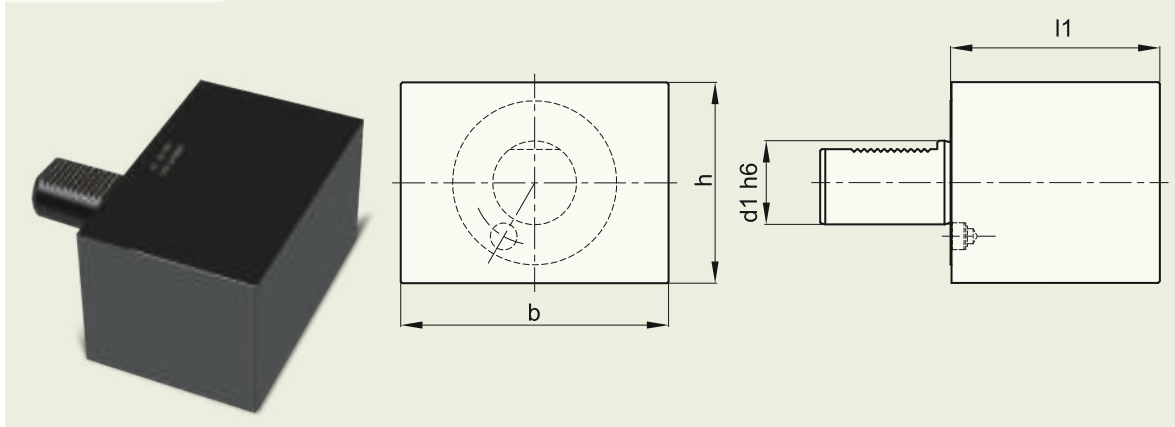


Spindle Rotation Anticlockwise
application of Face and ID Bore



PRE MACHINED BLANKS

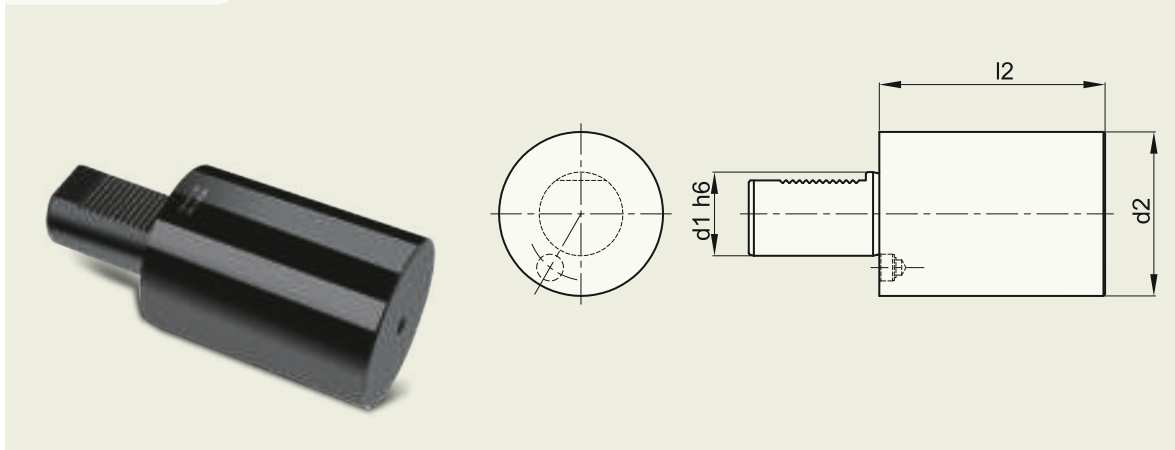
FORM A1



CODE	d1	l1	b	h
A1 16x44	16	44	78	44
A1 20x65	20	65	100	60
A1 25x75	25	75	100	60
A1 30x85	30	85	130	76
A1 40x100	40	100	151	96
A1 50x125	50	125	160	120
A1 60x160	60	160	165	125

PRE MACHINED BLANKS

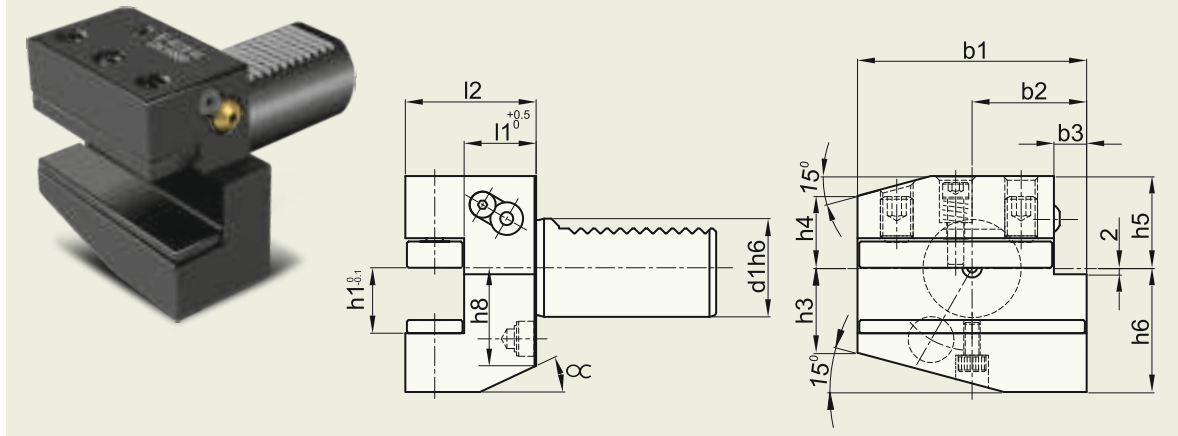
FORM A2



CODE	d1	d2	l2
A2 16x60	16	40	60
A2 20x70	20	50	70
A2 25x80	25	58	80
A2 30x100	30	68	100
A2 40x120	40	83	120
A2 50x135	50	98	135
A2 60x150	60	123	150

RIGHT HAND SHORT-RADIAL

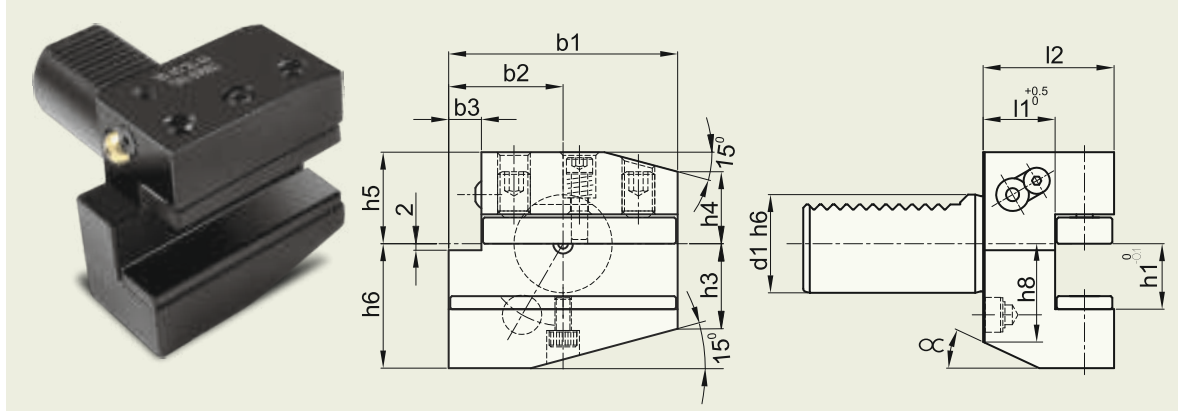
FORM B1



CODE	d1	b1	b2	b3	h1	h3	h4	h5	h6	h8	l1	l2	α
B1 16 12 24	16	42	23	5	12	15	15	20	22	19	13	24	30°
B1 20 16 30	20	55	30	7	16/12	19	19	25	30	23	16	30	30°
B1 25 16 30	25	55	30	7	16/12	22.5	22.5	25	30	25	16	30	30°
B1 30 20 40	30	70	35	10	20/16	26	22	28	38	30	22	40	25°
B1 40 25 44	40	85	42.5	12.5	25/20	35	30	32.5	48	-	22	44	-
B1 50 32 55	50	100	50	16	32/25	42	35	35	60	-	30	55	-
B1 60 32 60	60	125	62.5	16	32/25	46	42.5	42.5	62.5	-	30	60	-

LEFT HAND SHORT-RADIAL

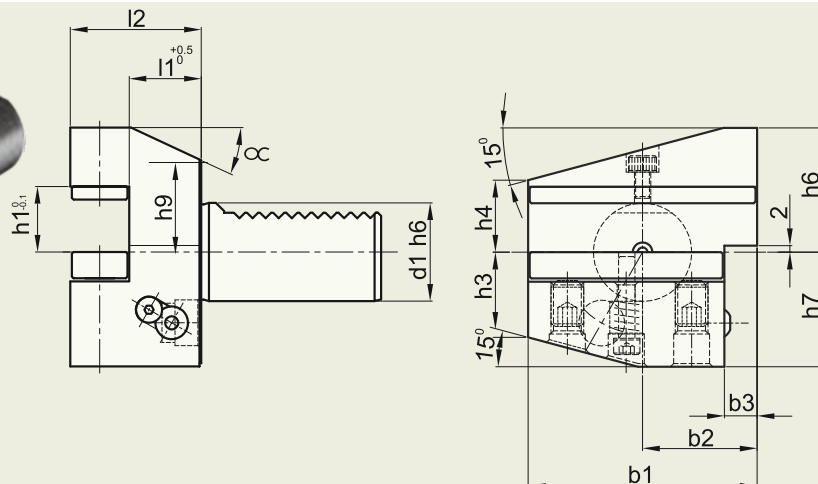
FORM B2



CODE	d1	b1	b2	b3	h1	h3	h4	h5	h6	h8	l1	l2	α
B2 16 12 24	16	42	23	5	12	15	15	20	22	19	13	24	30°
B2 20 16 30	20	55	30	7	16/12	19	19	25	30	23	16	30	30°
B2 25 16 30	25	55	30	7	16/12	22.5	22.5	25	30	25	16	30	30°
B2 30 20 40	30	70	35	10	20/16	26	22	28	38	30	22	40	25°
B2 40 25 44	40	85	42.5	12.5	25/20	35	30	32.5	48	-	22	44	-
B2 50 32 55	50	100	50	16	32/25	42	35	35	60	-	30	55	-
B2 60 32 60	60	125	62.5	16	32/25	46	42.5	42.5	62.5	-	30	60	-

RIGHT HAND SHORT OVER HEAD-RADIAL

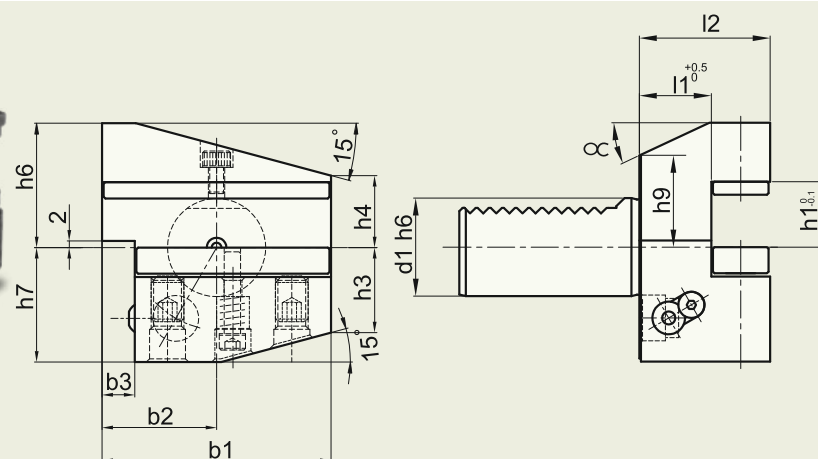
FORM B3



CODE	d1	b1	b2	b3	h1	h3	h4	h6	h7	h9	l1	l2	α
B3 16 12 24	16	42	23	5	12	15	15	22	20	19	13	24	30°
B3 20 16 30	20	55	30	7	16/12	19	19	30	25	23	16	30	30°
B3 25 16 30	25	55	30	7	16/12	22.5	22.5	30	25	25	16	30	30°
B3 30 20 40	30	70	35	10	20/16	26	22	38	35	28	22	40	25°
B3 40 25 44	40	85	42.5	12.5	25/20	35	30	48	42.5	-	22	44	-
B3 50 32 55	50	100	50	16	32/25	42	35	60	50	-	30	55	-
B3 60 32 60	60	125	62.5	16	32/25	46	42.5	62.5	62.5	-	30	60	-

LEFT HAND SHORT OVER HEAD-RADIAL

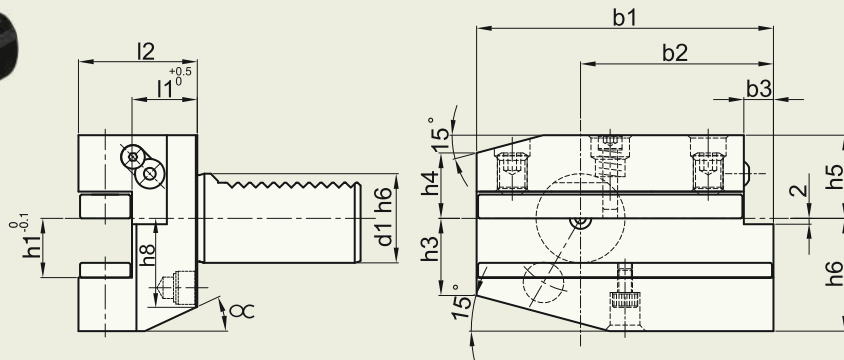
FORM B4



CODE	d1	b1	b2	b3	h1	h3	h4	h6	h7	h9	l1	l2	α
B4 16 12 24	16	42	23	5	12	15	15	22	20	19	13	24	30°
B4 20 16 30	20	55	30	7	16/12	19	19	30	25	23	16	30	30°
B4 25 16 30	25	55	30	7	16/12	22.5	22.5	30	25	25	16	30	30°
B4 30 20 40	30	70	35	10	20/16	26	22	38	35	28	22	40	25°
B4 40 25 44	40	85	42.5	12.5	25/20	35	30	48	42.5	-	22	44	-
B4 50 32 55	50	100	50	16	32/25	42	35	60	50	-	30	55	-
B4 60 32 60	60	125	62.5	16	32/25	46	42.5	62.5	62.5	-	30	60	-

RIGHT HAND LONG-RADIAL

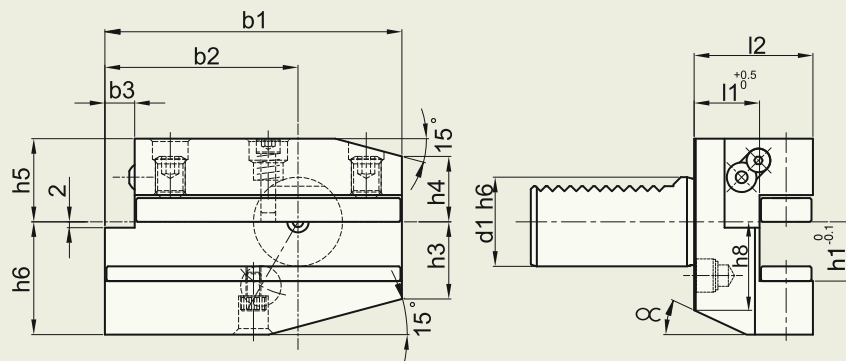
FORM B5



CODE	d1	b1	b2	b3	h1	h3	h4	h5	h6	h8	l1	l2	α
B5 16 12 24	16	58	39	5	12	15	15	20	22	19	13	24	30°
B5 20 16 30	20	75	50	7	16/12	19	19	25	30	23	16	30	30°
B5 25 16 30	25	75	50	7	16/12	22.5	22.5	25	30	25	16	30	30°
B5 30 20 40	30	100	65	10	20/16	26	22	28	38	30	22	40	25°
B5 40 25 44	40	118	75.5	12.5	25/20	35	30	32.5	48	-	22	44	-
B5 50 32 55	50	130	80	16	32/25	42	35	35	60	-	30	55	-
B5 60 32 60	60	145	82.5	16	32/25	46	42.5	42.5	62.5	-	30	60	-

LEFT HAND LONG-RADIAL

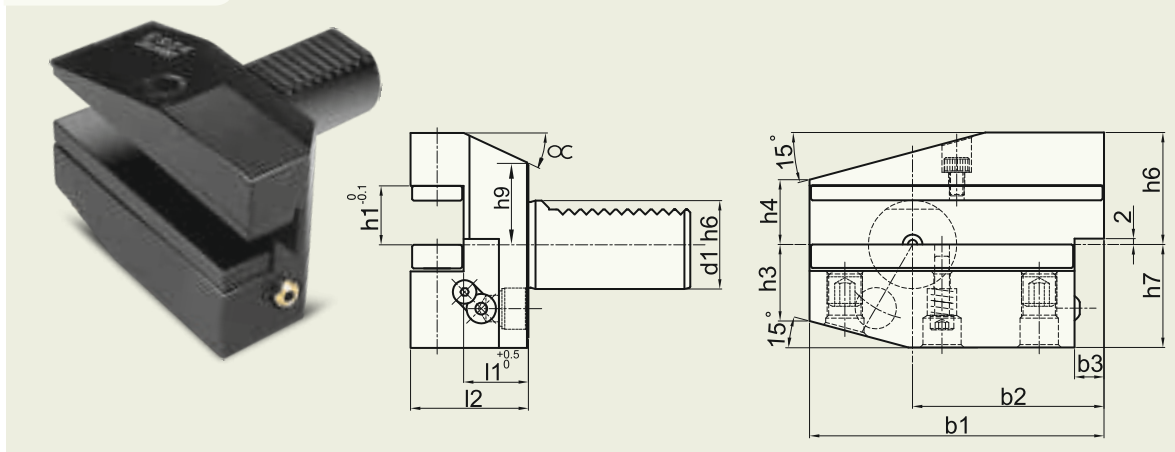
FORM B6



CODE	d1	b1	b2	b3	h1	h3	h4	h5	h6	h8	l1	l2	α
B6 16 12 24	16	58	39	5	12	15	15	20	22	19	13	24	30°
B6 20 16 30	20	75	50	7	16/12	19	19	25	30	23	16	30	30°
B6 25 16 30	25	75	50	7	16/12	22.5	22.5	25	30	25	16	30	30°
B6 30 20 40	30	100	65	10	20/16	26	22	28	38	30	22	40	25°
B6 40 25 44	40	118	75.5	12.5	25/20	35	30	32.5	48	-	22	44	-
B6 50 32 55	50	130	80	16	32/25	42	35	35	60	-	30	55	-
B6 60 32 60	60	145	82.5	16	32/25	46	42.5	42.5	62.5	-	30	60	-

RIGHT HAND LONG OVER HEAD-RADIAL

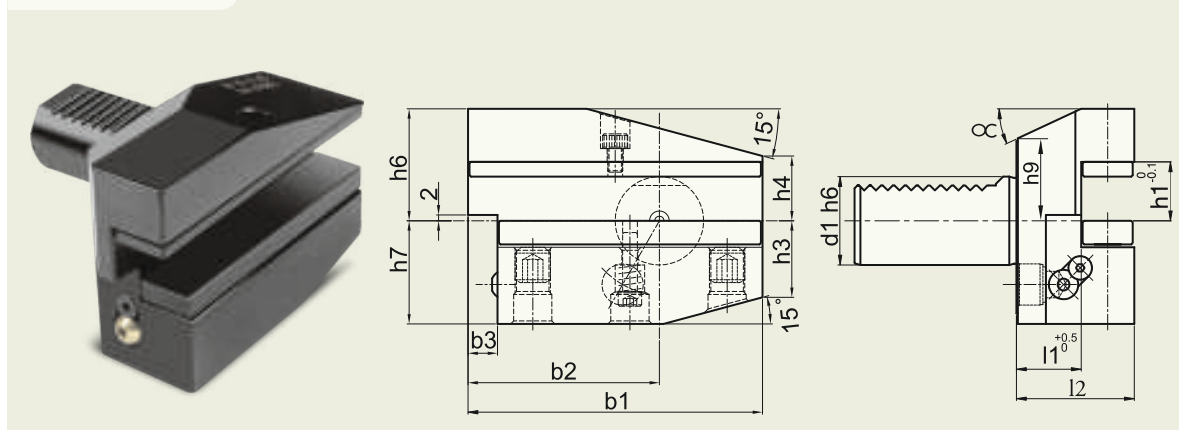
FORM B7



CODE	d1	b1	b2	b3	h1	h3	h4	h6	h7	h9	l1	l2	α
B7 16 12 24	16	58	39	5	12	15	15	22	20	19	13	24	30°
B7 20 16 30	20	75	50	7	16/12	19	19	30	25	23	16	30	30°
B7 25 16 30	25	75	50	7	16/12	22.5	22.5	30	25	25	16	30	30°
B7 30 20 40	30	100	65	10	20/16	26	22	38	35	28	22	40	25°
B7 40 25 44	40	118	75.5	12.5	25/20	35	30	48	42.5	-	22	44	-
B7 50 32 55	50	130	80	16	32/25	42	35	60	50	-	30	55	-
B7 60 32 60	60	145	82.5	16	32/25	46	42.5	62.5	62.5	-	30	60	-

LEFT HAND LONG OVER HEAD-RADIAL

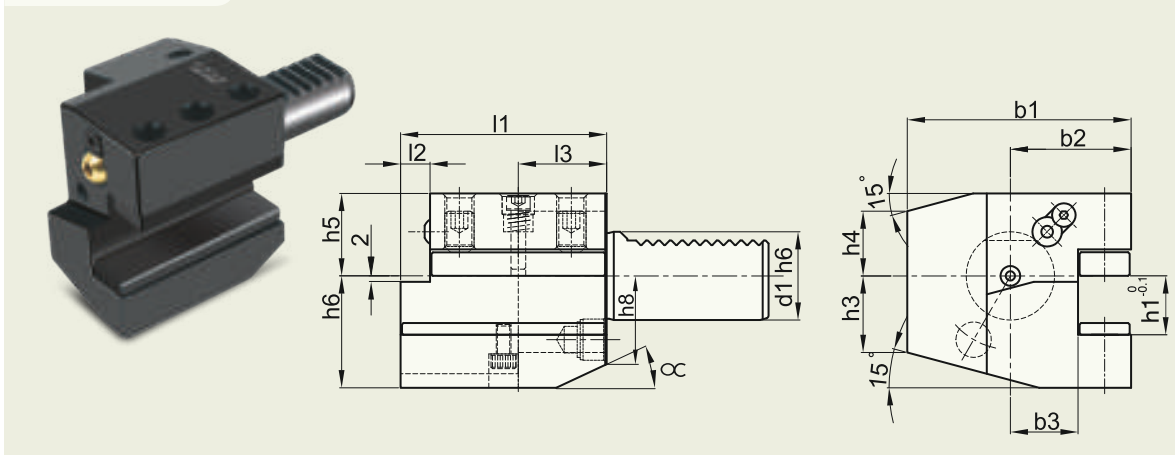
FORM B8



CODE	d1	b1	b2	b3	h1	h3	h4	h6	h7	h9	l1	l2	α
B8 16 12 24	16	58	39	5	12	15	15	22	20	19	13	24	30°
B8 20 16 30	20	75	50	7	16/12	19	19	30	25	23	16	30	30°
B8 25 16 30	25	75	50	7	16/12	22.5	22.5	30	25	25	16	30	30°
B8 30 20 40	30	100	65	10	20/16	26	22	38	35	28	22	40	25°
B8 40 25 44	40	118	75.5	12.5	25/20	35	30	48	42.5	-	22	44	-
B8 50 32 55	50	130	80	16	32/25	42	35	60	50	-	30	55	-
B8 60 32 60	60	145	82.5	16	32/25	46	42.5	62.5	62.5	-	30	60	-

RIGHT HAND -AXIAL

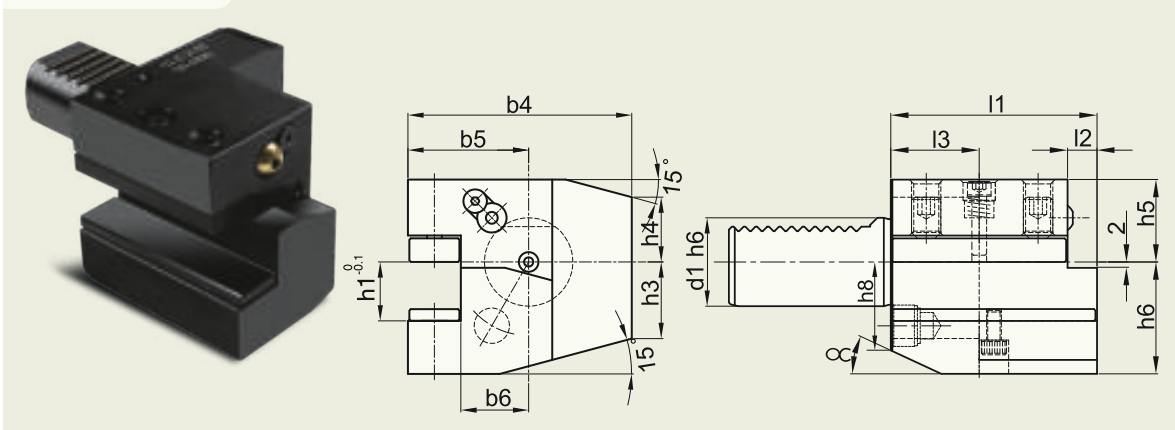
FORM C1



CODE	d1	b1	b2	b3	h1	h3	h4	h5	h6	h8	l1	l2	l3	α
C1 16 12 44	16	43	24	13	12	15	15	20	22	19	44	5	20	30°
C1 20 16 55	20	52	27	13	16/12	19	19	25	30	23	55	7	30	30°
C1 25 16 55	25	58	33	19	16/12	22.5	22.5	25	30	25	55	7	20	30°
C1 30 20 70	30	70	35	17	20/16	26	22	28	38	30	70	10	30	25°
C1 40 25 85	40	85	42.5	21	25/20	35	30	32.5	48	40	85	12.5	30	15°
C1 50 32 100	50	100	50	26	32/25	42	35	35	60	-	100	16	40	-
C1 60 32 125	60	125	62.5	33	32/25	46	42.5	42.5	62.5	-	125	16	40	-

LEFT HAND -AXIAL

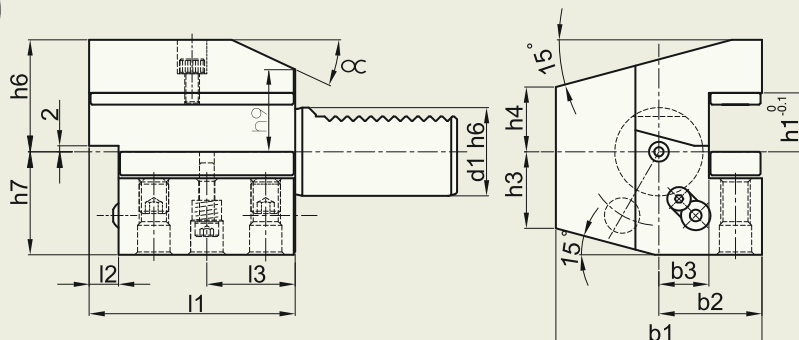
FORM C2



CODE	d1	b4	b5	b6	h1	h3	h4	h5	h6	h8	l1	l2	l3	α
C2 16 12 44	16	43	24	13	12	15	15	20	22	19	44	5	20	30°
C2 20 16 55	20	57	32	18	16/12	19	19	25	30	23	55	32	30	30°
C2 25 16 55	25	58	33	19	16/12	22.5	22.5	25	30	25	55	7	20	30°
C2 30 20 70	30	76	41	23	20/16	26	22	28	38	30	70	10	30	25°
C2 40 25 85	40	90	47.5	25.5	25/20	35	30	32.5	48	40	85	12.5	30	15°
C2 50 32 100	50	105	55	30.5	32/25	42	35	35	60	-	100	16	40	-
C2 60 32 125	60	125	62.5	33	32/25	46	42.5	42.5	62.5	-	125	16	40	-

RIGHT HAND OVER HEAD-AXIAL

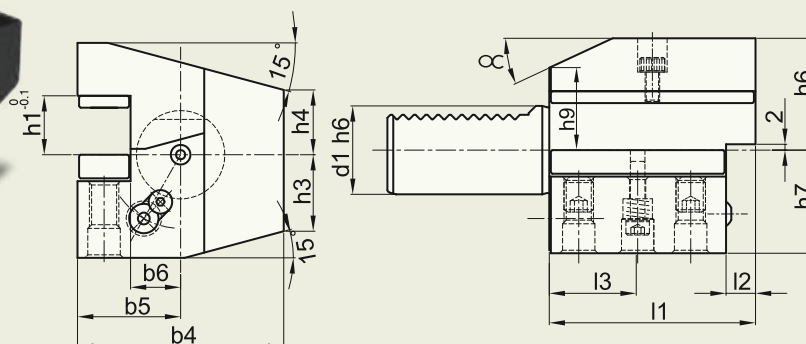
FORM C3



CODE	d1	b1	b2	b3	h1	h3	h4	h6	h7	h9	l1	l2	l3	α
C3 16 12 44	16	43	24	13	12	15	15	22	20	19	44	5	20	30°
C3 20 16 55	20	52	27	13	16/12	19	19	30	25	23	55	7	30	30°
C3 25 16 55	25	58	33	19	16/12	22.5	22.5	30	25	25	55	7	20	30°
C3 30 20 70	30	70	35	17	20/16	26	22	38	35	28	70	10	30	25°
C3 40 25 85	40	85	42.5	21	25/20	35	30	48	42.5	40	85	12.5	30	15°
C3 50 32 100	50	100	50	26	32/25	42	35	60	50	-	100	16	40	-
C3 60 32 125	60	125	62.5	33	32/25	46	42.5	62.5	62.5	-	125	16	40	-

LEFT HAND OVER HEAD -AXIAL

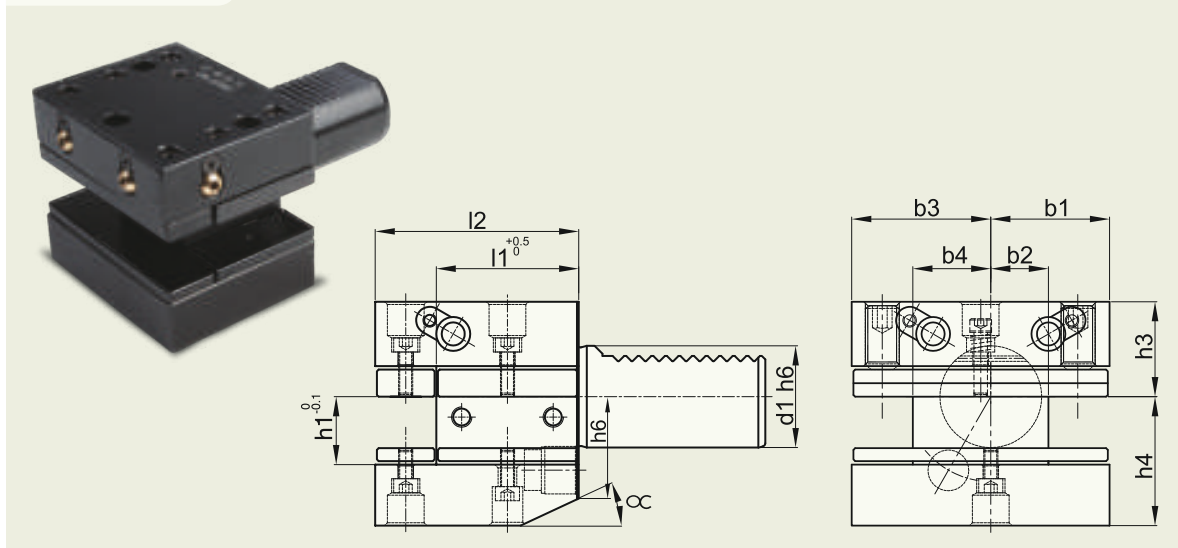
FORM C4



CODE	d1	b4	b5	b6	h1	h3	h4	h6	h7	h9	l1	l2	l3	α
C4 16 12 44	16	43	24	13	12	15	15	22	20	19	44	5	20	30°
C4 20 16 55	20	57	32	18	16/12	19	19	30	25	23	55	7	30	30°
C4 25 16 55	25	58	33	19	16/12	22.5	22.5	30	25	25	55	7	20	30°
C4 30 20 70	30	76	41	23	20/16	26	22	38	35	28	70	10	30	25°
C4 40 25 85	40	90	47.5	25.5	25/20	35	30	48	42.5	40	85	12.5	30	15°
C4 50 32 100	50	105	55	30.5	32/25	42	35	60	50	-	100	16	40	-
C4 60 32 125	60	125	62.5	33	32/25	46	42.5	62.5	62.5	-	125	16	40	-

MULTIPLE SQUARE SEATS HOLDER

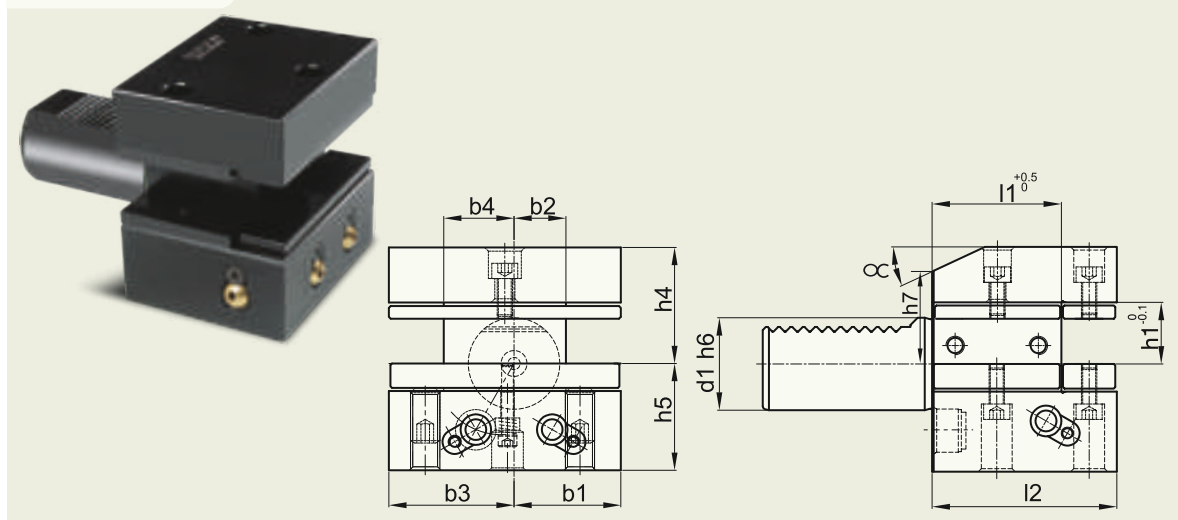
FORM D1



CODE	d1	b1	b2	b3	b4	h1	h3	h4	h6	l1	l2	α
D1 25 16 48	25	33	19	33	19	16/12	25	30	25	34	48	30°
D1 30 20 60	30	35	17	41	23	20/16	28	38	30	42	60	25°
D1 40 25 72	40	42.5	21	47.5	25.5	25/20	32.5	48	40	50	72	15°
D1 50 32 85	50	50	26	55	30.5	32/25	35	60	-	60	85	-
D1 60 32 110	60	57.5	33	57.5	33	32/25	42.5	62.5	-	85	110	-

MULTIPLE SQUARE SEATS OVERHEAD

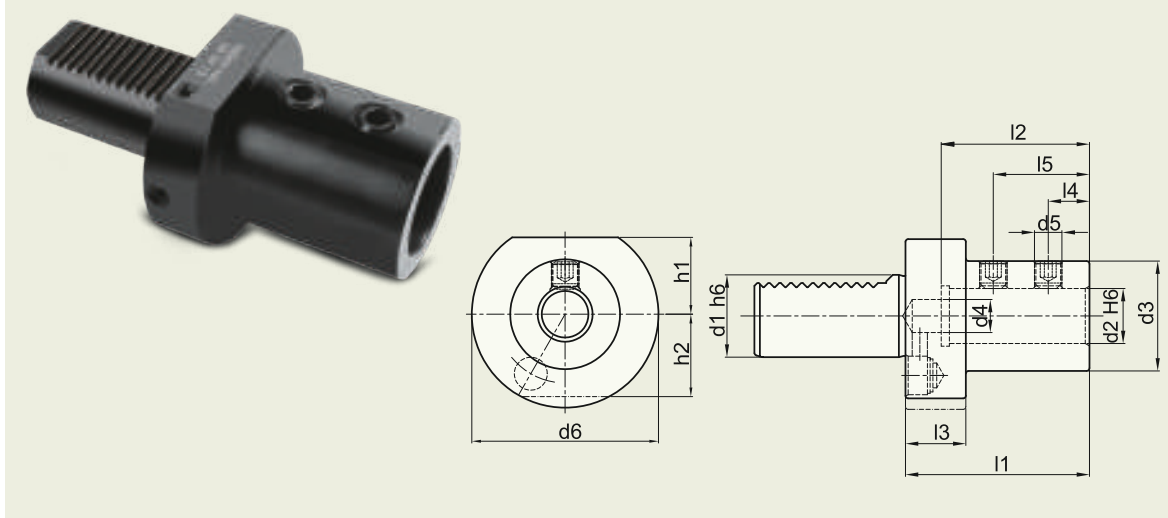
FORM D2



CODE	d1	b1	b2	b3	b4	h1	h4	h5	h7	l1	l2	α
D2 25 16 48	25	33	19	33	19	16/12	30	25	25	34	48	30°
D2 30 20 60	30	35	17	41	23	20/16	38	35	28	42	60	25°
D2 40 25 72	40	42.5	21	47.5	25.5	25/20	48	42.5	40	50	72	15°
D2 50 32 85	50	50	26	55	30.5	32/25	60	50	-	60	85	-
D2 60 32 110	60	57.5	33	57.5	33	32/25	62.5	62.5	-	85	110	-

THROUGH COOLANT BORING BAR HOLDERS

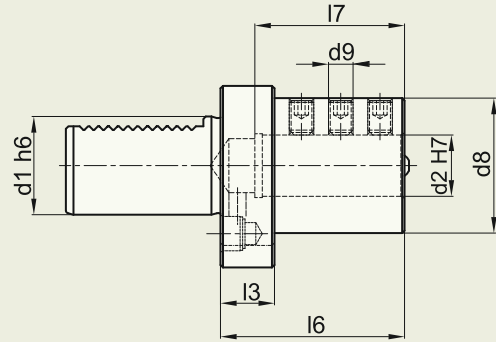
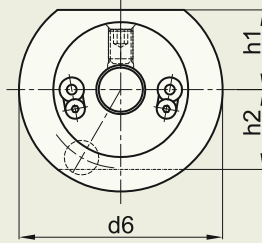
FORM E1



CODE	d1	d2	d3	d4	d5	d6	h1	h2	l1	l2	l3	l4	l5
E1 20x16	20	16	36	12	M10x1	50	-	23	64	51	18	15	35
E1 20x20	20	20	40	12	M10x1	50	-	23	67	54	18	15	35
E1 20x25	20	25	45	17	M12x1	50	-	23	71	59	18	17	40
E1 25x16	25	16	40	12	M10x1	58	25	25	67	54	18	15	35
E1 25x20	25	20	40	12	M10x1	58	25	25	67	54	18	15	35
E1 25x25	25	25	45	17	M12x1	58	25	25	71	59	18	17	40
E1 30x16	30	16	36	12	M10x1	68	28	30	64	51	22	15	35
E1 30x20	30	20	40	12	M10x1	68	28	30	67	54	22	15	35
E1 30x25	30	25	45	17	M12x1	68	28	30	71	59	22	17	40
E1 30x32	30	32	52	24	M12x1	68	28	30	75	63	22	17	44
E1 30x40	30	40	65	32	M16x1	68	28	30	90	73	22	22	50
E1 40x16	40	16	36	12	M10x1	83	32.5	-	64	51	22	15	35
E1 40x20	40	20	40	12	M10x1	83	32.5	-	67	54	22	15	35
E1 40x25	40	25	45	17	M12x1	83	32.5	-	75	59	22	17	40
E1 40x32	40	32	52	24	M12x1	83	32.5	-	75	63	22	17	44
E1 40x40	40	40	65	32	M16x1	83	32.5	-	90	73	22	22	50
E1 50x20	50	20	40	12	M10x1	98	35	-	67	54	30	15	35
E1 50x25	50	25	45	17	M12x1	98	35	-	80	59	30	17	40
E1 50x32	50	32	52	24	M12x1	98	35	-	80	63	30	17	44
E1 50x40	50	40	65	32	M16x1	98	35	-	90	73	30	22	50
E1 50x50	50	50	75	42	M16x1	98	35	-	100	83	30	24	60
E1 60x20	60	20	40	12	M10x1	123	42.5	-	80	54	30	15	35
E1 60x25	60	25	45	17	M12x1	123	42.5	-	80	59	30	17	40
E1 60x32	60	32	52	24	M12x1	123	42.5	-	80	63	30	17	44
E1 60x40	60	40	65	32	M16x1	123	42.5	-	90	73	30	22	50
E1 60x50	60	50	75	42	M16x1	123	42.5	-	100	83	30	24	60

BORING BAR HOLDERS

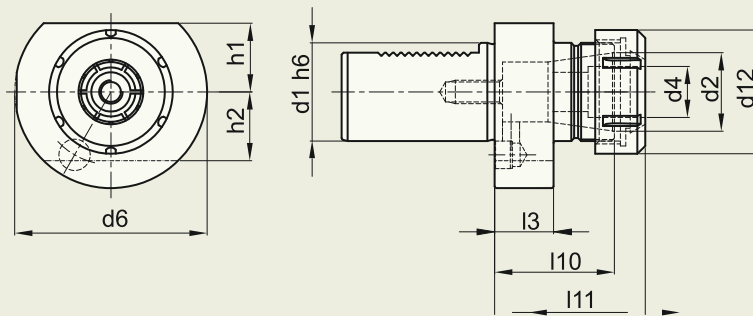
FORM E2



CODE	d1	d2	d6	d8	d9	h1	h2	l3	l6	l7
E2 16x6	16	6	40	32	M6	18	18	13	44	34
E2 16x8	16	8	40	32	M6	18	18	13	44	34
E2 16x10	16	10	40	32	M6	18	18	13	44	34
E2 16x12	16	12	40	40	M8	18	18	-	44	34
E2 16x16	16	16	40	40	M8	18	18	-	44	34
E2 20x8	20	8	50	40	M6	-	23	18	50	41
E2 20x10	20	10	50	40	M6	-	23	18	50	41
E2 20x12	20	12	50	40	M8	-	23	18	50	41
E2 20x16	20	16	50	40	M8	-	23	18	50	41
E2 20x20	20	20	50	50	M8	-	23	-	50	41
E2 20x25	20	25	50	50	M8	-	23	-	60	51
E2 25x8	25	8	58	40	M6	25	25	18	50	41
E2 25x10	25	10	58	40	M6	25	25	18	50	41
E2 25x12	25	12	58	40	M8	25	25	18	50	41
E2 25x16	25	16	58	40	M8	25	25	18	50	41
E2 25x20	25	20	58	58	M8	25	25	18	50	41
E2 25x25	25	25	58	58	M8	25	25	18	60	51
E2 30x8	30	8	68	55	M6	28	30	22	60	51
E2 30x10	30	10	68	55	M6	28	30	22	60	51
E2 30x12	30	12	68	55	M8	28	30	22	60	51
E2 30x16	30	16	68	55	M8	28	30	22	60	51
E2 30x20	30	20	68	55	M8	28	30	22	60	51
E2 30x25	30	25	68	55	M8	28	30	22	60	51
E2 30x32	30	32	68	68	M8	28	30	-	75	61
E2 40x8	40	8	83	55	M6	32.5	-	22	75	51
E2 40x10	40	10	83	55	M8	32.5	-	22	75	51
E2 40x12	40	12	83	55	M8	32.5	-	22	75	61
E2 40x16	40	16	83	55	M10	32.5	-	22	75	61
E2 40x20	40	20	83	55	M10	32.5	-	22	75	61
E2 40x25	40	25	83	55	M10	32.5	-	22	75	61
E2 40x32	40	32	83	83	M10	32.5	-	-	75	61
E2 40x40	40	40	83	83	M10	32.5	-	-	90	76
E2 50x16	50	16	98	68	M10	35	-	30	90	76
E2 50x20	50	20	98	68	M12	35	-	30	90	76
E2 50x25	50	25	98	68	M12	35	-	30	90	76
E2 50x32	50	32	98	68	M12	35	-	30	90	76
E2 50x40	50	40	98	98	M12	35	-	-	90	76
E2 50x50	50	50	98	98	M12	35	-	-	100	86
E2 60x16	60	16	123	68	M10	42.5	-	30	90	76
E2 60x20	60	20	123	68	M12	42.5	-	30	90	76
E2 60x25	60	25	123	68	M12	42.5	-	30	90	76
E2 60x32	60	32	123	68	M12	42.5	-	30	90	76
E2 60x40	60	40	123	98	M12	42.5	-	30	90	76
E2 60x50	60	50	123	98	M12	42.5	-	30	100	86

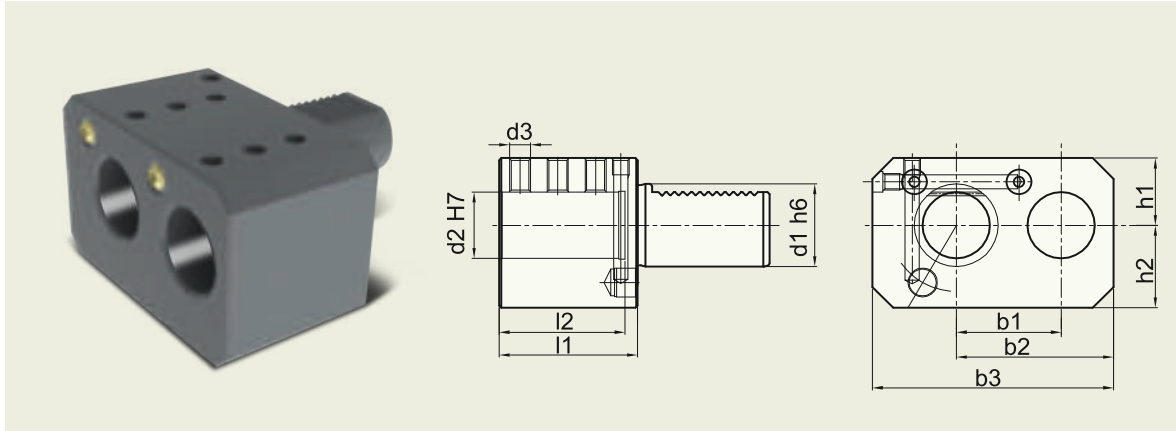
COLLET CHUCKS AS PER DIN 6499

FORM E4



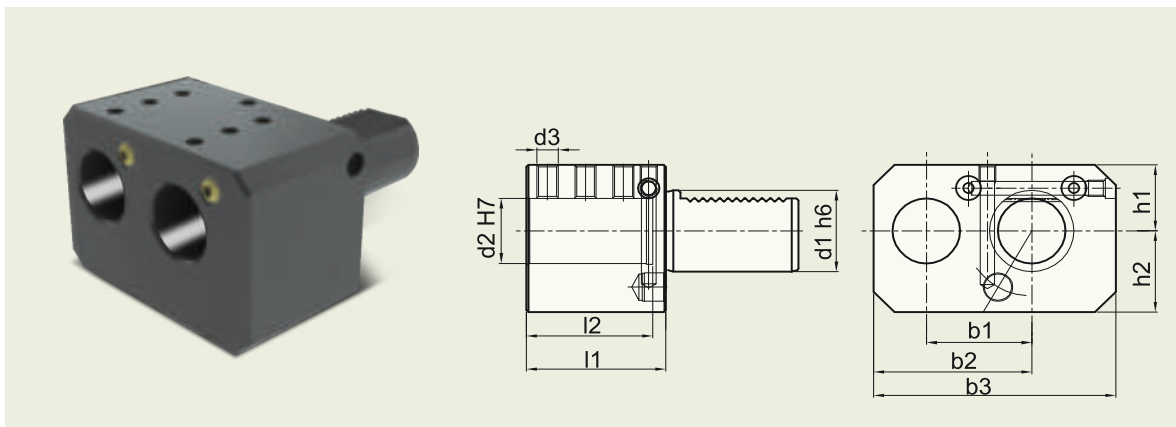
CODE	d1	d2	d4	d6	d12	h1	h2	l3	l10	l11
E4 16x16	16	16	0.5-10	40	28	18	-	13	27.5	34.5
E4 16x20	16	20	1-13	40	34	18	18	13	32.5	44
E4 20x16	20	16	0.5-10	50	28	-	23	18	32.5	44
E4 20x20	20	20	1-13	50	34	-	23	18	32.5	44
E4 20x25	20	25	1-16	50	42	-	23	18	38	50
E4 25x20	25	25	1-13	58	34	25	25	18	32.5	44
E4 25x25	25	25	1-16	58	42	25	25	18	45	57
E4 25x32	32	25	2-20	58	50	25	25	18	49.5	62
E4 30x25	30	25	1-16	68	42	28	30	22	45	57
E4 30x32	30	32	2-20	68	50	28	30	22	49.5	62.5
E4 30x40	30	40	3-26	68	63	28	30	22	56	70
E4 40x25	40	25	1-16	83	42	32.5	-	22	49.5	62
E4 40x32	40	32	2-20	83	50	32.5	-	22	49.5	62
E4 40x40	40	40	3-26	83	63	32.5	-	22	61	75
E4 50x25	50	25	1-16	98	42	35	-	22	45	57
E4 50x32	50	32	2-20	98	50	35	-	30	61	75
E4 50x40	50	40	3-26	98	63	35	-	30	61	75
E4 60x32	60	32	2-20	123	50	42.5	-	30	61	75
E4 60x40	60	40	3-26	123	63	42.5	-	30	61	75

FORM E7 (DOUBLE BORING BAR HOLDER - RIGHT)



CODE	d1	d2	h1	h2	l1	l2	b1	b2	b3	d3
E7 20 16	20	16	25	25	45	42	32	51	76	M8
E7 20 20	20	20	25	25	45	42	32	51	76	M8
E7 30 25	30	25	28	32	56	52	45	65	95	M8
E7 30 32	30	32	28	32	66	60	50	75	110	M8
E7 40 32	40	32	32.5	40	66	60	50	75	115	M10
E7 40 40	40	40	32.5	40	90	80	50	75	115	M10
E7 50 32	50	32	32.5	47.5	66	60	50	75	115	M12
E7 50 40	50	40	32.5	47.5	90	80	50	75	115	M12
E7 50 50	50	50	35	49	115	100	68	103	152	M12
E7 60 60	60	60	49	58	137	120	85	125	174	M16

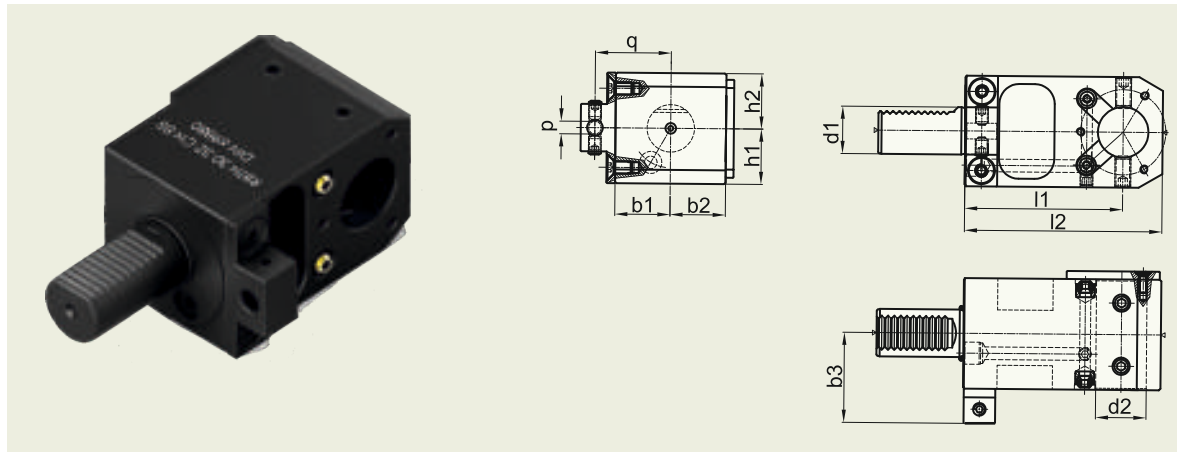
FORM E8 (DOUBLE BORING BAR HOLDER - LEFT)



CODE	d1	d2	h1	h2	l1	l2	b1	b2	b3	d3
E8 20 16	20	16	25	25	45	42	32	51	76	M8
E8 20 20	20	20	25	25	45	42	32	51	76	M8
E8 30 25	30	25	28	32	56	52	50	65	95	M8
E8 30 32	30	32	28	32	66	60	50	75	110	M8
E8 40 32	40	32	32.5	40	66	60	50	75	115	M10
E8 40 40	40	40	32.5	40	90	80	50	75	115	M10
E8 50 32	50	32	32.5	47.5	66	60	50	75	115	M12
E8 50 40	50	40	32.5	47.5	90	80	50	75	115	M12
E8 50 50	50	50	35	49	115	100	68	103	152	M12
E8 60 60	60	60	49	58	137	120	85	125	174	M16

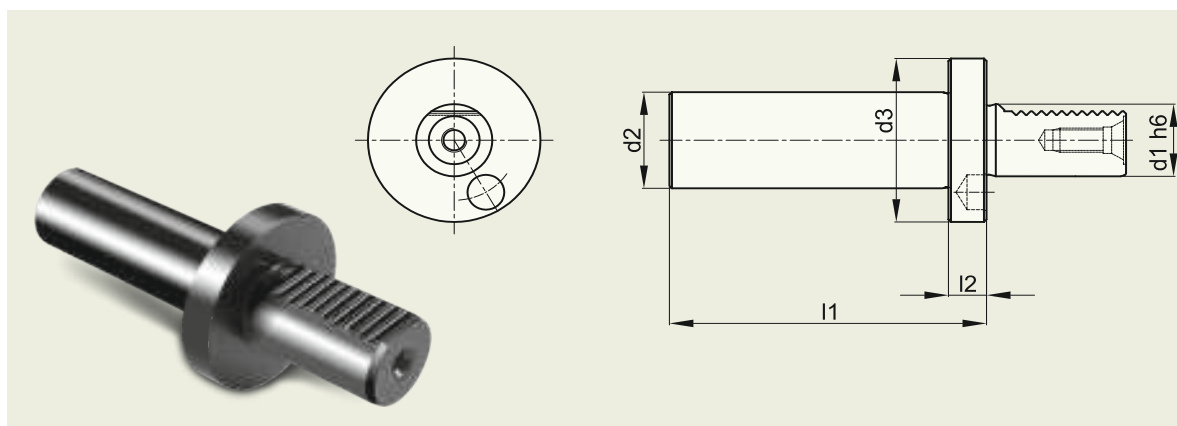
* Customised design can be supplied upon request

RBTH (RADIAL BORING TOOL HOLDER FOR RADIAL TOOL DISC)



CODE	d1	d2	h1	h2	b1	b2	b3	l1	l2	p	q
RBTH 25 25 CH-75	25	25	32	32	35	35	57	75	100	8	40
RBTH 25 32 CH-75	25	32	32	32	35	35	57	75	100	8	40
RBTH 30 25 CH-85	30	25	35	35	35	35	57	85	110	8	48
RBTH 30 32 CH-85	30	32	35	35	35	35	57	85	110	8	48
RBTH 30 40 CH-85	30	40	35	35	35	35	57	85	110	8	48
RBTH 30 25 CH-100	30	25	35	35	35	35	57	100	125	8	48
RBTH 30 32 CH-100	30	32	35	35	35	35	57	100	125	8	48
RBTH 30 40 CH-100	30	40	35	35	35	35	57	100	125	8	48
RBTH 40 25 CH-100	40	25	38	38	45	45	65	100	130	10	56
RBTH 40 32 CH-100	40	32	38	38	45	45	65	100	130	10	56
RBTH 40 40 CH-100	40	40	38	38	45	45	65	100	130	10	56
RBTH 50 50 CH-120	50	50	48	48	50	50	73.5	120	155	10	63

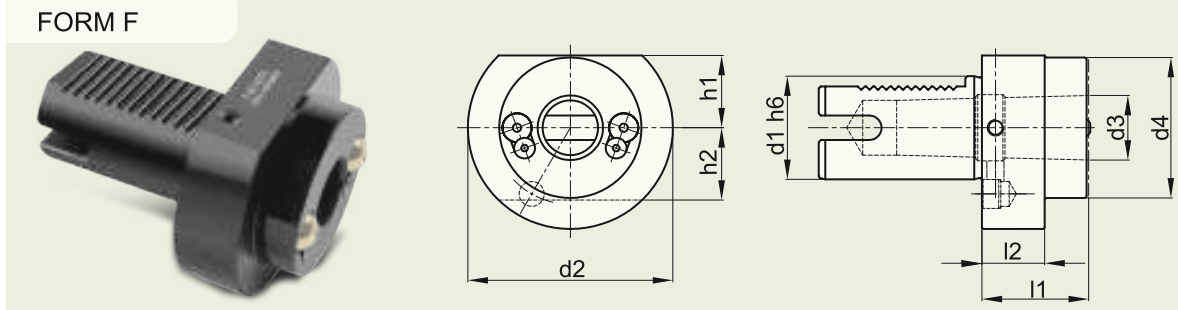
TEST MANDREL



CODE	d1	d2	d3	l1	l2
Y 16	16	30	40	125	15
Y 20	20	40	50	125	15
Y 25	25	40	58	125	15
Y 30	30	40	68	125	15
Y 40	40	40	83	125	15
Y 50	50	40	98	125	15
Y 60	60	40	123	125	15

MORSE TAPER HOLDERS

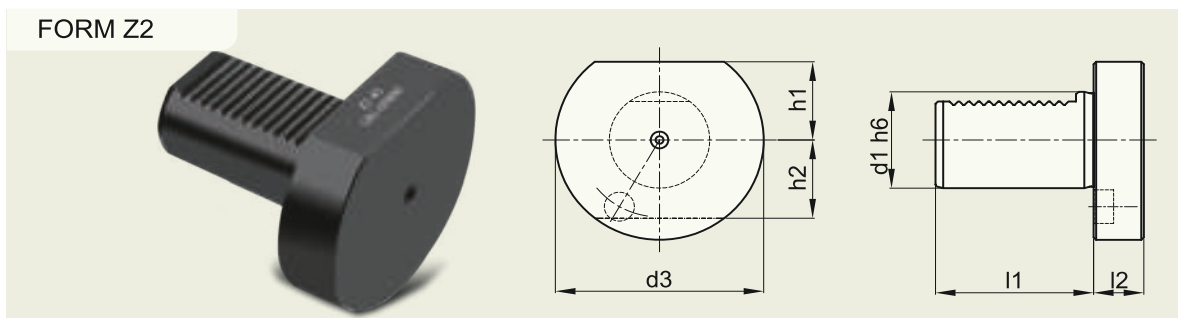
FORM F



CODE	d1	d2	MT	d3	d4	h1	h2	l1	l2
F 16 MT 1	16	40	1	12.065	-	18	18	50	-
F 16 MT 2	16	40	2	17.780	-	18	18	87	-
F 20 MT 1	20	50	1	12.065	-	-	23	23	-
F 20 MT 2	20	50	2	17.780	-	-	23	61	-
F 25 MT 1	25	58	1	12.065	-	25	25	23	-
F 25 MT 2	25	58	2	17.780	-	25	25	27	-
F 30 MT 1	30	68	1	12.065	-	28	30	27	-
F 30 MT 2	30	68	2	17.780	-	28	30	27	-
F 30 MT 3	30	68	3	23.825	-	28	30	73	-
F 40 MT 1	40	83	1	12.065	55	32.5	-	36	22
F 40 MT 2	40	83	2	17.780	55	32.5	-	36	22
F 40 MT 3	40	83	3	23.825	58	32.5	-	36	22
F 40 MT 4	40	83	4	31.267	68	32.5	-	80	22
F 50 MT 1	50	98	1	12.065	55	35	-	36	30
F 50 MT 2	50	98	2	17.780	55	35	-	36	30
F 50 MT 3	50	98	3	23.825	58	35	-	36	30
F 50 MT 4	50	98	4	31.267	68	35	-	50	30
F 50 MT 5	50	98	5	44.399	98	35	-	169	-
F 60 MT 2	60	123	2	17.780	55	42.5	-	36	30
F 60 MT 3	60	123	3	23.825	58	42.5	-	36	30
F 60 MT 4	60	123	4	31.267	68	42.5	-	50	30
F 60 MT 5	60	123	5	44.399	98	42.5	-	63	31

PLUG

FORM Z2

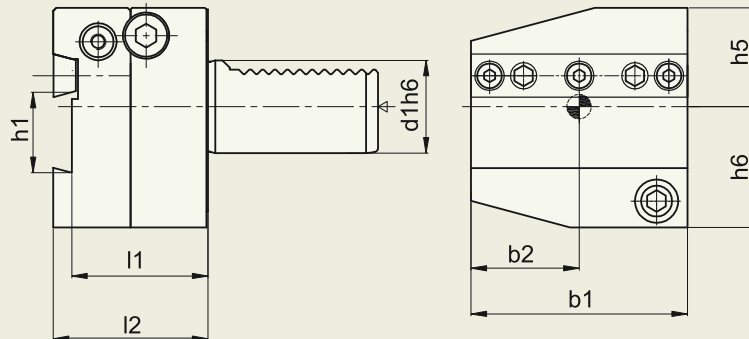


CODE	d1	d3	h1	h2	l1	l2	
Z2 16S	-	16	40	18	18	32	13
Z2 20S	-	20	50	23	23	40	16
Z2 25S	Z2 25P	25	58	25	25	48	16
Z2 30S	Z2 30P	30	68	28	30	55	16
Z2 40S	Z2 40P	40	83	32.5	-	63	20
Z2 50S	Z2 50P	50	98	35	-	78	20
Z2 60S	-	60	123	42.5	-	94	20

* 'S' Stands for Steel Plug
'P' Stands for Plastic Plug

CUTOFF TOOL HOLDER

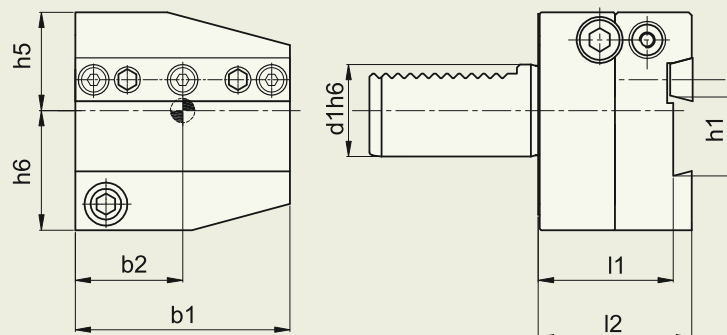
AR



CODE	d1	b1	b2	h1	h5	h6	l1	l2
AR20 26	20	60	30	26	28	36	44	50
AR25 26	25	60	30	26	28	36	44	50
AR30 26	30	70	35	26	32	39	44	50
AR30 32	30	70	35	32	32	39	44	50
AR40 26	40	85	42.5	26	43	41.5	44	50
AR40 32	40	85	42.5	32	43	41.5	44	50
AR50 26	50	100	50	26	43	45	44	50
AR50 32	50	100	50	32	43	45	44	50
AR60 26	60	125	62.5	26	48	55	44	50
AR60 32	60	125	62.5	32	48	55	44	50

CUTOFF TOOL HOLDER

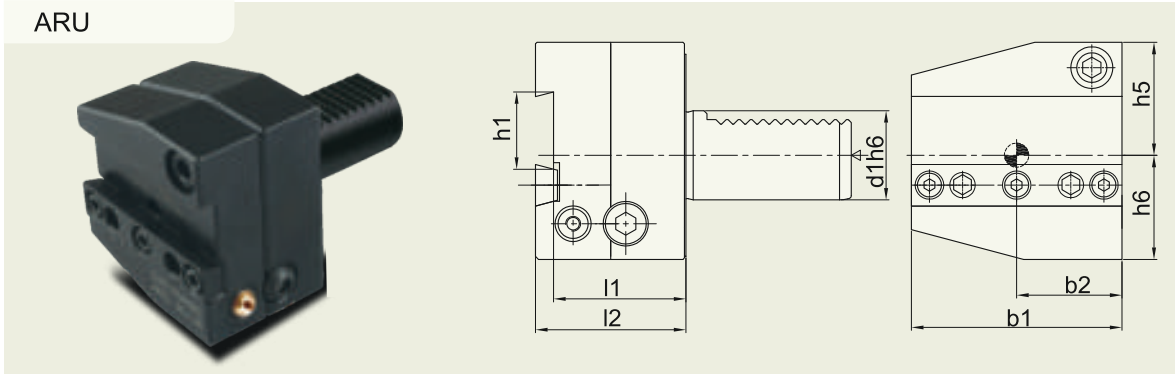
AL



CODE	d1	b1	b2	h1	h5	h6	l1	l2
AL20 26	20	60	30	26	28	36	44	50
AL25 26	25	60	30	26	28	36	44	50
AL30 26	30	70	35	26	32	39	44	50
AL30 32	30	70	35	32	32	39	44	50
AL40 26	40	85	42.5	26	43	41.5	44	50
AL40 32	40	85	42.5	32	43	41.5	44	50
AL50 26	50	100	50	26	43	45	44	50
AL50 32	50	100	50	32	43	45	44	50
AL60 26	60	125	62.5	26	48	55	44	50
AL60 32	60	125	62.5	32	48	55	44	50

CUTOFF TOOL HOLDER

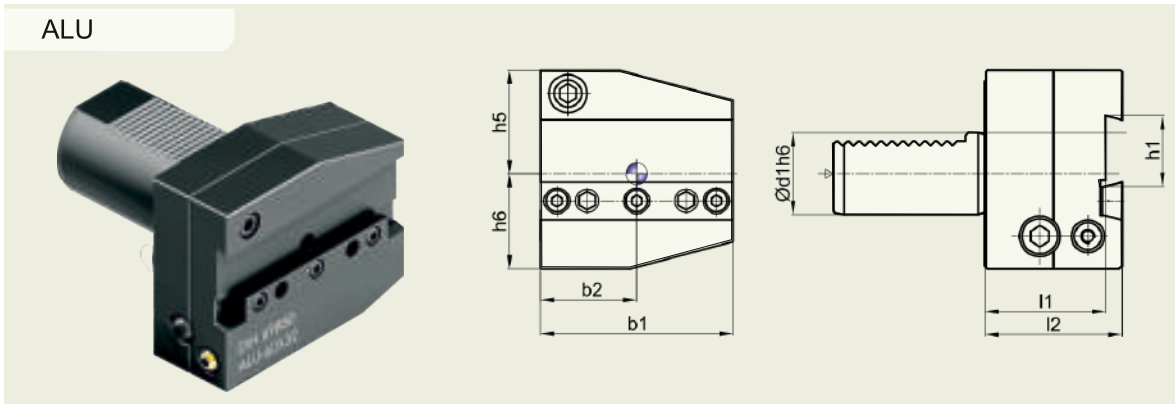
ARU



CODE	d1	b1	b2	h1	h5	h6	l1	l2
ARU25 26	25	60	30	26	36	28	44	50
ARU30 26	30	70	35	26	38	35	44	50
ARU30 32	30	70	35	32	38	35	44	50
ARU40 26	40	85	42.5	26	43	41.5	44	50
ARU40 32	40	85	42.5	32	43	41.5	44	50
ARU50 26	50	100	50	26	43	45	44	50
ARU50 32	50	100	50	32	43	45	44	50
ARU60 26	60	125	62.5	26	48	55	44	50
ARU60 32	60	125	62.5	32	48	55	44	50

CUTOFF TOOL HOLDER

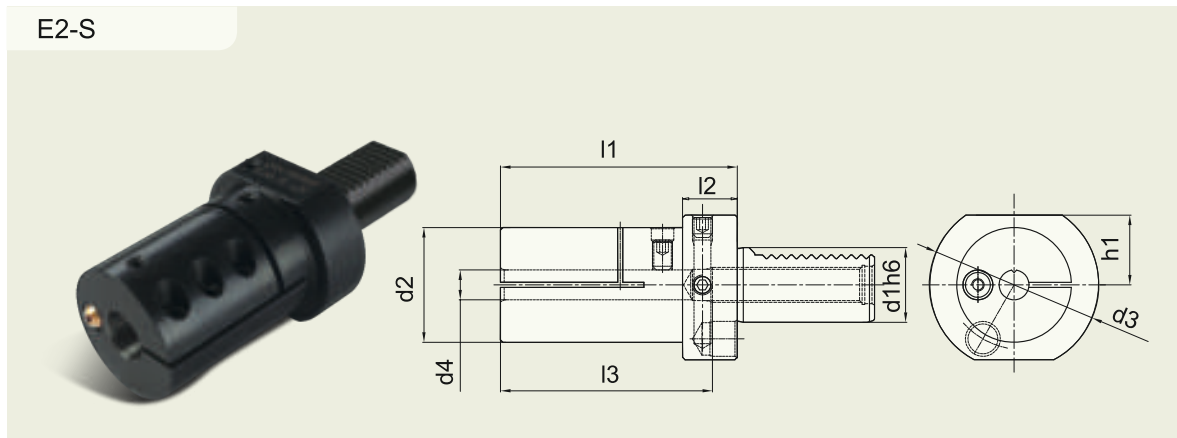
ALU



CODE	d1	b1	b2	h1	h5	h6	l1	l2
ALU25 26	25	60	30	26	36	28	44	50
ALU30 26	30	70	35	26	38	35	44	50
ALU30 32	30	70	35	32	38	35	44	50
ALU40 26	40	85	42.5	26	43	41.5	44	50
ALU40 32	40	85	42.5	32	43	41.5	44	50
ALU50 26	50	100	50	26	43	45	44	50
ALU50 32	50	100	50	32	43	45	44	50
ALU60 26	60	125	62.5	26	48	55	44	50
ALU60 32	60	125	62.5	32	48	55	44	50

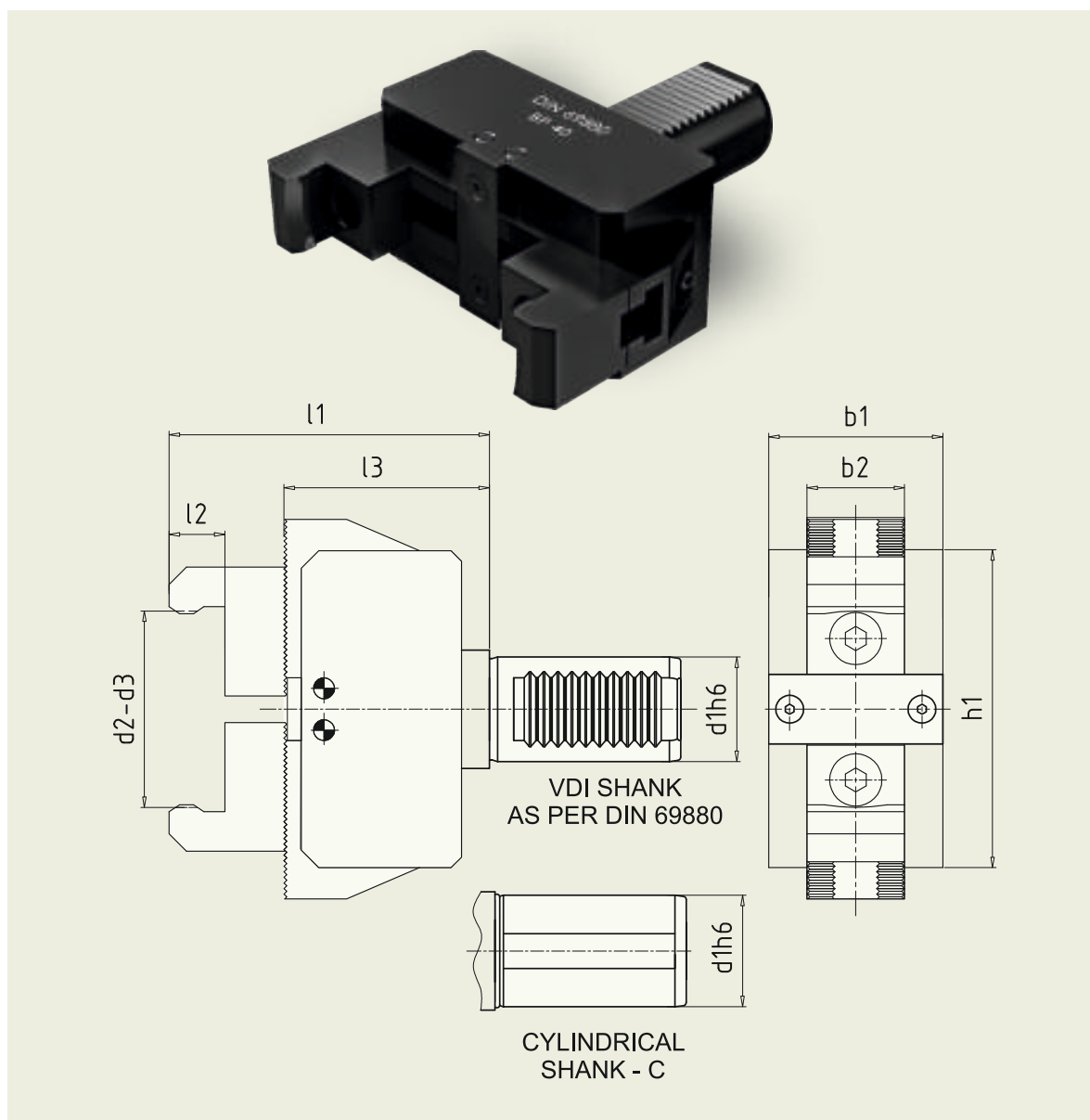
DAMPED TOOL HOLDER

E2-S



CODE	d1	d2	d3	d4	h1	l1	l2	l3
E2-S-30x06	30	46	68	06	28	88	22	53
E2-S-30x08	30	46	68	08	28	88	22	53
E2-S-30x10	30	46	68	10	28	88	22	65
E2-S-30x12	30	46	68	12	28	88	22	70
E2-S-30x16	30	50	68	16	28	88	22	70
E2-S-30x20	30	54	68	20	28	96	22	80
E2-S-30x25	30	58	68	25	28	112	22	100
E2-S-30x32	30	63	68	32	28	142	22	128
E2-S-30x40	30	73	68	40	28	174	22	150
E2-S-40x06	40	46	83	06	32.5	88	22	53
E2-S-40x08	40	46	83	08	32.5	88	22	53
E2-S-40x10	40	46	83	10	32.5	88	22	65
E2-S-40x12	40	46	83	12	32.5	95	22	85
E2-S-40x16	40	50	83	16	32.5	88	22	70
E2-S-40x20	40	54	83	20	32.5	96	22	80
E2-S-40x25	40	58	83	25	32.5	112	22	100
E2-S-40x32	40	63	83	32	32.5	142	22	128
E2-S-40x40	40	73	83	40	32.5	174	22	150
E2-S-50x16	50	50	98	16	35	103	30	85
E2-S-50x20	50	54	98	20	35	103	30	89
E2-S-50x25	50	59	98	25	35	120	30	106
E2-S-50x32	50	65	98	32	35	150	30	128
E2-S-50x40	50	73	98	40	35	182	30	160
E2-S-50x50	50	83	98	50	35	182	30	160
E2-S-60x25	60	59	123	25	42.5	120	30	106
E2-S-60x32	60	65	123	32	42.5	150	30	128
E2-S-60x40	60	73	123	40	42.5	182	30	160
E2-S-60x50	60	83	123	50	42.5	202	30	180
E2-S-60x60	60	102	123	60	42.5	202	30	180

BAR PULLER



CODE	d1	RANGE		b1	b2	h1	l1	l2	l3
		d2 - d3 SHORT JAWS	d2 - d3 LONG JAWS						
BP 25	25	8-60	54-110	50	28	72	84	16	51
BP 30	30	8-60	54-110	50	28	72	92	16	59
BP 32C	32	8-60	54-110	50	28	72	92	16	59
BP 40	40	8-66	54-110	60	28	110	94	16	61
BP 40C	40	8-66	54-110	60	28	110	94	16	61
BP 50	50	8-75	60-125	65	28	130	114	16	81
BP 50C	50	8-75	60-125	65	28	130	114	16	81

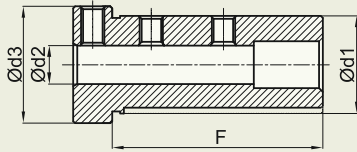
REDUCTION SLEEVES

FOR VDI TOOL HOLDER E1 & E2
BORING BAR HOLDER ONLY

SPHOORTI
Precision Assured

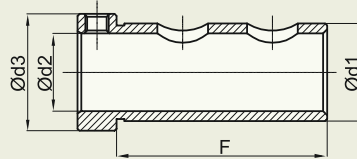
TYPE - A

(FOR E1 & E2 VARIETIES OF SMALLER TOOLS)



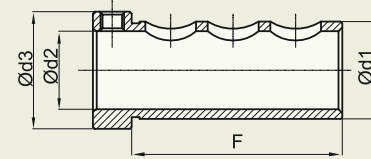
TYPE - B

(FOR E1 VARIETIES OF BIGGER TOOLS)



TYPE - C

(FOR E2 VARIETIES OF BIGGER TOOLS)



CODE	Ød1	Ød2	F	SUITS FOR
SM E 20 08	20	08	39	E1 20x20 E1 30x20 E1 40x20 E1 50x20
SM E 20 10		10		E2 20x20 E2 30x20 E2 40x20 E2 50x20
SM E 25 08	25	08	50	E1 20x25 E1 30x25 E1 40x25
SM E 25 10		10		E1 50x25 E2 30x25
SM E 25 12		12		E2 40x25 E2 50x25
SM E 32 08	32	08	59	E1 30x32 E1 40x32 E1 50x32
SM E 32 10		10		E2 30x32
SM E 32 12		12		E2 40x32
SM E 32 16		16		E2 50x32
SM E 40 08	40	08	69	E1 30x40 E1 40x40 E1 50x40
SM E 40 10		10		E2 40x40
SM E 40 12		12		E2 50x40
SM E 40 16		16		
SM E 40 20		20		
SM E 50 08	50	08	80	E1 40x50 E1 50x50
SM E 50 10		10		E1 60x50
SM E 50 12		12		E2 40x50
SM E 50 16		16		E2 50x50
SM E 50 20		20		

CODE	Ød1	Ød2	F	SUITS FOR
SM E1 20 12	20	12	52	E1 20x20 E1 30x20 E1 40x20 E1 50x20
SM E1 20 16		16		
SM E1 25 16	25	16	50	E1 20x25 E1 30x25 E1 40x25 E1 50x25
SM E1 25 20		20		
SM E1 32 20	32	20	59	E1 30x32 E1 40x32 E1 50x32
SM E1 32 25		25		
SM E1 40 25	40	25	69	E1 30x40 E1 40x40 E1 50x40
SM E1 40 32		32		
SM E1 50 25	50	25	80	E1 40x50 E1 50x50 E1 60x50
SM E1 50 32		32		
SM E1 50 40		40		

CODE	Ød1	Ød2	F	SUITS FOR
SM E2 20 12 L39	20	12	39	E2 20x20 E2 30x20
SM E2 20 12 L52			52	E2 40x20 E2 50x20
SM E2 20 16 L39	20	16	39	E2 20x20 E2 30x20
SM E2 20 16 L52			52	E2 40x20 E2 50x20
SM E2 25 16	25	16	50	E2 20x25 E2 30x25 E2 40x25 E2 50x25
SM E2 25 20		20		
SM E2 32 20	32	20	59	E2 30x32 E2 40x32 E2 50x32
SM E2 32 25		25		
SM E2 40 25	40	25	69	E2 40x40 E2 50x40
SM E2 40 32		32		
SM E2 50 25	50	25	80	E2 40x50 E2 50x50 E2 60x50
SM E2 50 32		32		
SM E2 50 40		40		

* Made out of medium carbon steel and toughened to 20± 2 HRC.

REDUCTION SLEEVES

FOR VDI TOOL HOLDER-RBTH
RADIAL BORING TOOL HOLDER ONLY

RBTH REDUCTION SLEEVES

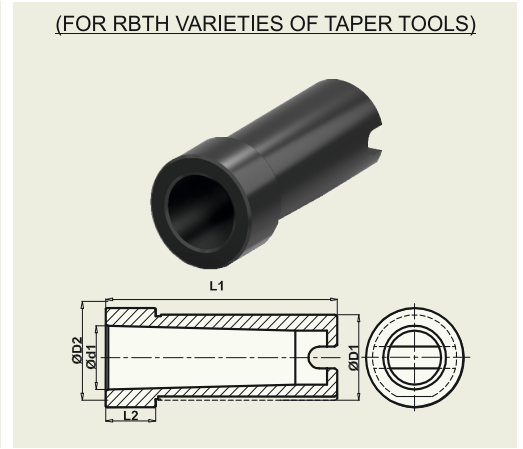
(FOR RBTH VARIETIES OF SMALLER TOOLS)



(FOR RBTH VARIETIES OF BIGGER TOOLS)



(FOR RBTH VARIETIES OF TAPER TOOLS)

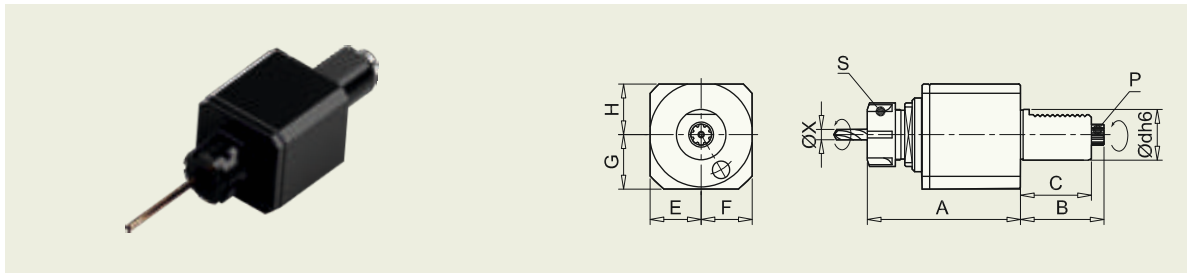


ITEM NAME	ØD1	ØD2	Ød1	L1	L2	L3	SUITS FOR
SM RBTH 25/30 25 08	25	30	08	79	10	57	RBTH 25 25 CH75
SM RBTH 25/30 25 10			10			57	RBTH 30 25 CH85
SM RBTH 25/30 25 12			12			57	RBTH 30 25 CH100
SM RBTH 25/30 25 16			16			79	
SM RBTH 25/30 32 08	32	37	08	79	10	57	RBTH 25 32 CH75
SM RBTH 25/30 32 10			10			57	RBTH 30 32 CH85
SM RBTH 25/30 32 12			12			57	RBTH 30 32 CH100
SM RBTH 25/30 32 16			16			79	
SM RBTH 30 40 08	40	45	08	79	10	57	RBTH 30 40 CH85
SM RBTH 30 40 10			10			57	RBTH 30 40 CH100
SM RBTH 30 40 12			12			57	
SM RBTH 30 40 16			16			79	
SM RBTH 40 25 08	25	30	08	85	10	50	RBTH 40 25 CH100
SM RBTH 40 25 10			10			50	RBTH 40 25 CH120
SM RBTH 40 25 12			12			50	
SM RBTH 40 25 16			16			75	
SM RBTH 40 32 08	32	37	08	85	10	50	RBTH 40 32 CH 100
SM RBTH 40 32 10			10			50	RBTH 40 32 CH 120
SM RBTH 40 32 12			12			50	
SM RBTH 40 32 16			16			75	
SM RBTH 40 40 08	40	45	08	85	10	50	RBTH 40 40 CH 100
SM RBTH 40 40 10			10			50	RBTH 40 40 CH 120
SM RBTH 40 40 12			12			50	
SM RBTH 40 40 16			16			75	

ITEM NAME	ØD1	ØD2	Ød1	L1	L2	SUITS FOR
SM RBTH 25/30 25 16	25	30	16	79	10	RBTH 25 25 CH75
SM RBTH 25/30 25 20			20			RBTH 30 25 CH85
SM RBTH 25/30 25 20			20			RBTH 30 25 CH100
SM RBTH 25/30 32 20	32	37	20	79	10	RBTH 25 32 CH75
SM RBTH 25/30 32 20			20			RBTH 30 32 CH85
SM RBTH 25/30 32 25			25			RBTH 30 32 CH100
SM RBTH 30 40 20	40	45	20	79	10	RBTH 30 40 CH85
SM RBTH 30 40 25			25			RBTH 30 40 CH100
SM RBTH 30 40 32			32			
SM RBTH 40 25 20	25	30	20	85	10	RBTH 40 25 CH100
SM RBTH 40 25 20			20			RBTH 40 25 CH120
SM RBTH 40 32 20			20			
SM RBTH 40 32 25	32	37	25	85	10	RBTH 40 32 CH 100
SM RBTH 40 32 25			25			RBTH 40 32 CH 120
SM RBTH 40 40 20			20			
SM RBTH 40 40 25	40	45	25	85	10	RBTH 40 40 CH 100
SM RBTH 40 40 25			25			RBTH 40 40 CH 120
SM RBTH 40 40 32			32			

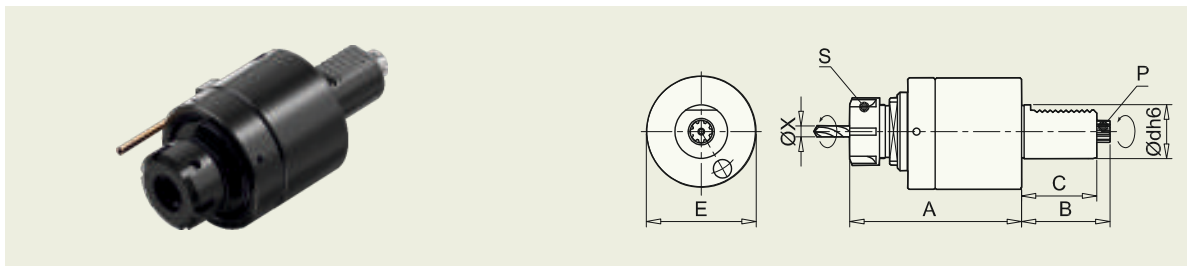
ITEM NAME	ØD1	ØD2	Ød1	L1	L2	SUITS FOR
SM RBTH 25/30 25 MT1	25	30	MT1	79	10	RBTH 25 25 CH75
SM RBTH 25/30 25 MT2			MT2			RBTH 30 25 CH85
SM RBTH 25/30 25 MT3			MT3			88
SM RBTH 25/30 32 MT1	32	37	MT1	79	10	RBTH 25 32 CH75
SM RBTH 25/30 32 MT2			MT2			RBTH 30 32 CH85
SM RBTH 25/30 32 MT3			MT3			88
SM RBTH 30 40 MT1	40	45	MT1	79	10	RBTH 30 40 CH85
SM RBTH 30 40 MT2			MT2			RBTH 30 40 CH100
SM RBTH 30 40 MT3			MT3			88
SM RBTH 40 25 Mt1	25	30	MT1	85	10	RBTH 40 25 CH100
SM RBTH 40 25 MT2			MT2			RBTH 40 25 CH120
SM RBTH 40 25 MT3			MT3			94
SM RBTH 40 32 MT1	32	37	MT1	85	10	RBTH 40 32 CH 100
SM RBTH 40 32 MT2			MT2			RBTH 40 32 CH 120
SM RBTH 40 32 MT3			MT3			85
SM RBTH 40 40 MT1	40	45	MT1	85	10	RBTH 40 40 CH 100
SM RBTH 40 40 MT2			MT2			RBTH 40 40 CH 120
SM RBTH 40 40 MT3			MT3			94

AXIAL TOOL HEAD - SQUARE



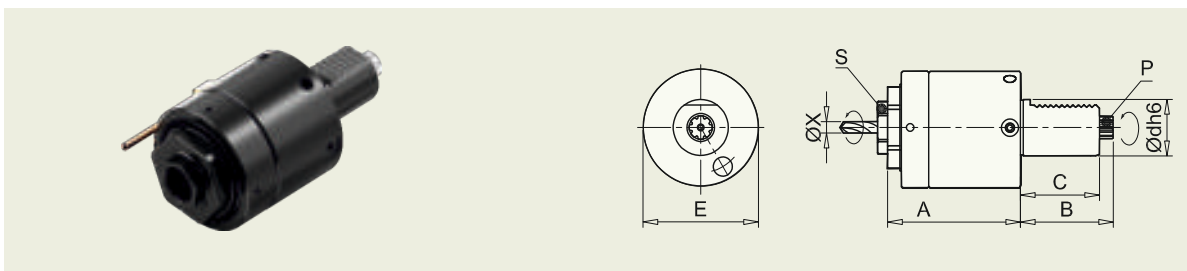
CODE	Ødh6	A	B	C	E	F	G	H	ØX	i	N _{max} RPM	S (DIN 6499)	T Nm	P	SUITS FOR
SD6102	30	94	55	45	30	30	30	28	1-13	1:1	6000	ER20	40	B15X12-9b	DRIVEN TOOL DISC VDI Ø30 BORE
SD6112	30	98.5	55	45	30	30	30	28	1-16	1:1	6000	ER25	40	B15X12-9b	DRIVEN TOOL DISC VDI Ø30 BORE
SD6202	40	123	63	53	41	41	43	40	1-20	1:1	5000	ER32	70	B17X14-9b	DRIVEN TOOL DISC VDI Ø40 BORE

AXIAL TOOL HEAD - ROUND - EXT NUT



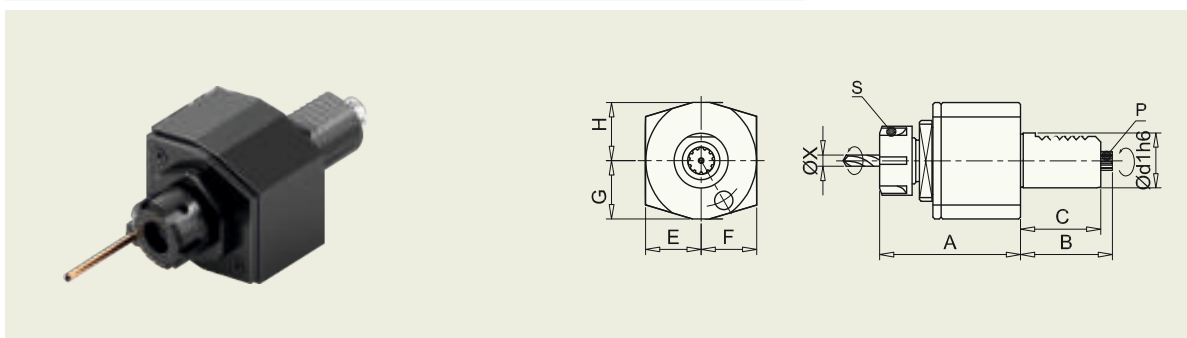
CODE	Ødh6	A	B	C	E	ØX	i	N _{max} RPM	S (DIN 6499)	T Nm	P	SUITS FOR
SD6113	30	98.5	55	45	68	1-16	1:1	6000	ER25	40	B15X12-9b	DRIVEN TOOL DISC VDI Ø30 BORE
SD6211	40	120.5	63	53	83	1-20	1:1	5000	ER32	70	B17X14-9b	DRIVEN TOOL DISC VDI Ø40 BORE

AXIAL TOOL HEAD - ROUND - INT NUT



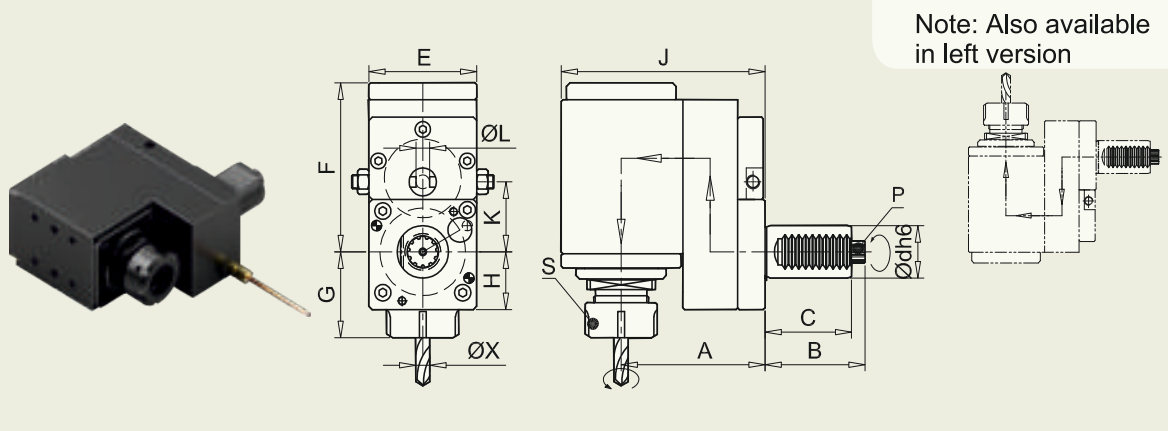
CODE	Ødh6	A	B	C	E	ØX	i	N _{max} RPM	S (DIN 6499)	T Nm	P	SUITS FOR
SD6116	30	80	55	45	68	1-16	1:1	6000	ER25	40	B15X12-9b	DRIVEN TOOL DISC VDI Ø30 BORE
SD6225	40	95	63	53	83	1-20	1:1	5000	ER32	70	B17X14-9b	DRIVEN TOOL DISC VDI Ø40 BORE

AXIAL TOOL HEAD - SHORT



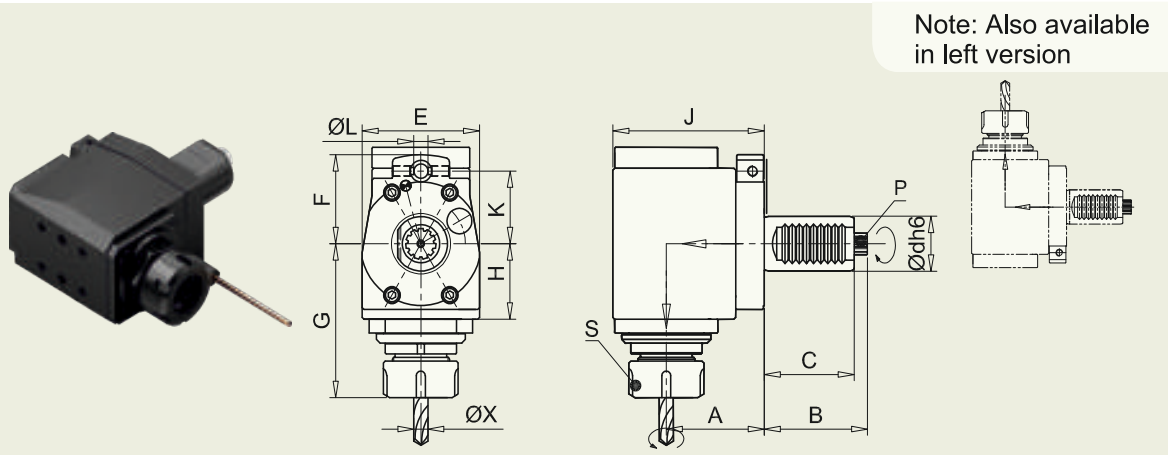
CODE	Ødh6	A	B	C	E	F	G	H	ØX	i	N _{max} RPM	S (DIN 6499)	T Nm	P	SUITS FOR
SD6104	30	78	55	45	35	35	33	33	1-13	1:1	4000	ER20	40	B15X12-9b	DRIVEN TOOL DISC VDI Ø30 BORE
SD6204	40	85	63	53	42.5	42.5	38	38	1-20	1:1	4000	ER32	70	B17X14-9b	DRIVEN TOOL DISC VDI Ø40 BORE

RADIAL TOOL HEAD



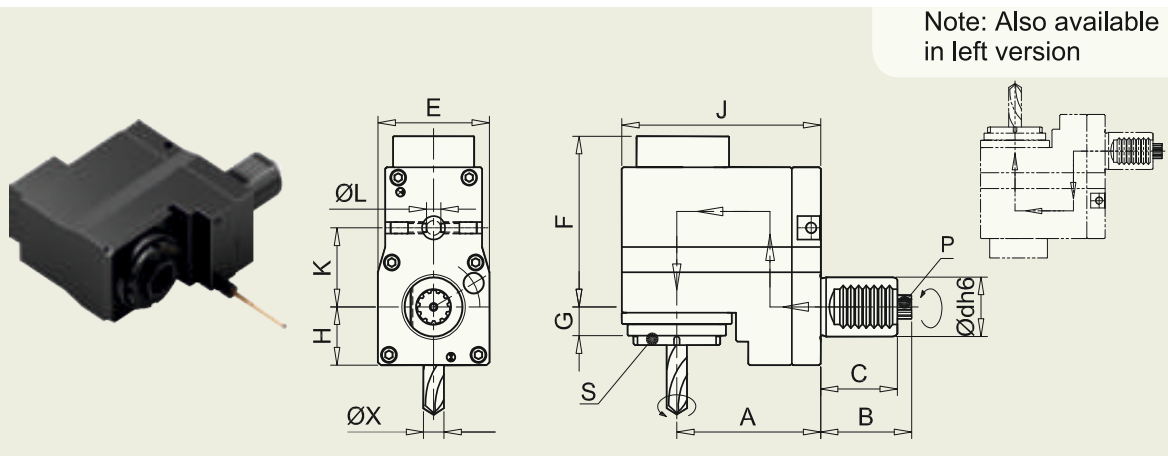
CODE	Ødh6	A	B	C	E	F	G	H	J	K	ØL	ØX	i	N _{max} RPM (DIN 6499)	S	T Nm	VERSION	P	SUITS FOR
SD6110	30	89	55	45	63	96.5	49	33	124	40	8	1-16	1:1	6000	ER25	40	R	B15X12-9b	DRIVEN TOOL DISC VDI Ø30 BORE
SD6210	40	98	63	53	80	108.5	43	43	138	63	10	1-20	1:1	5000	ER32	70	R	B17X14-9b	DRIVEN TOOL DISC VDI Ø40 BORE

RADIAL TOOL HEAD - DIRECT



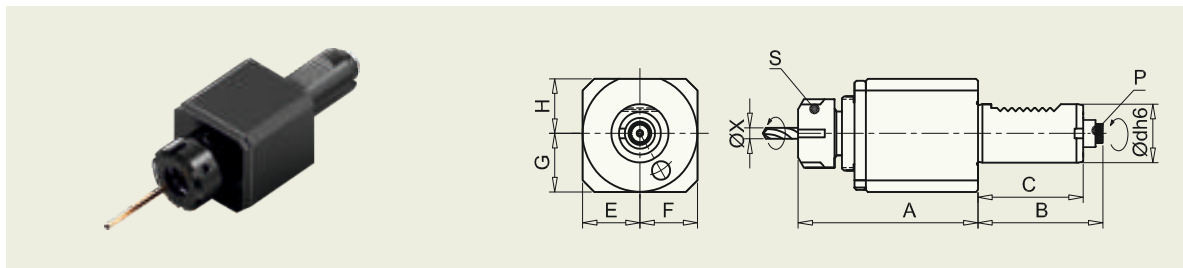
CODE	Ødh6	A	B	C	E	F	G	H	J	K	ØL	ØX	i	N _{max} RPM (DIN 6499)	S	T Nm	VERSION	P	SUITS FOR
SD6115	30	55	55	45	66	53	84.5	41.5	85	40	8	1-16	1:1	6000	ER25	40	R	B15X12-9b	DRIVEN TOOL DISC VDI Ø30 BORE
SD6215	40	64	63	53	76	74	90	43	98	63	10	1-20	1:1	5000	ER32	70	R	B17X14-9b	DRIVEN TOOL DISC VDI Ø40 BORE

RADIAL TOOL HEAD - INT NUT - THROUGH COOLANT



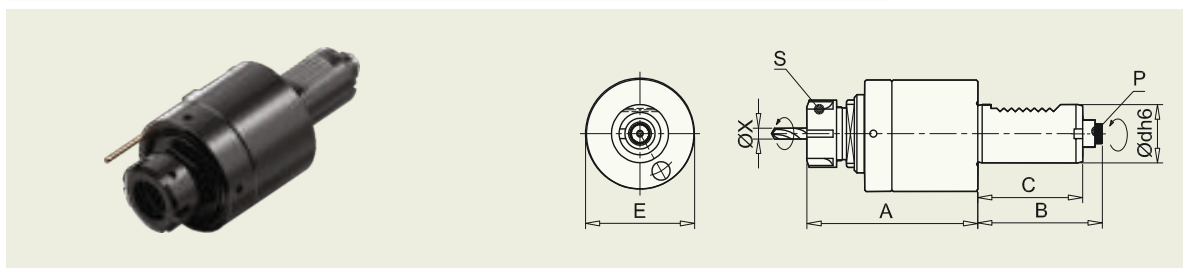
CODE	Ødh6	A	B	C	E	F	G	H	J	K	ØL	ØX	i	N _{max} RPM (DIN 6499)	S	T Nm	VERSION	P	SUITS FOR
SD6213	40	99.5	63	53	77	115.5	33	39.5	137.5	63	10	1-20	1:1	5000	ER32	70	R	B17X14-9b	DRIVEN TOOL DISC VDI Ø40 BORE

AXIAL TOOL HEAD - SQUARE - EXT NUT



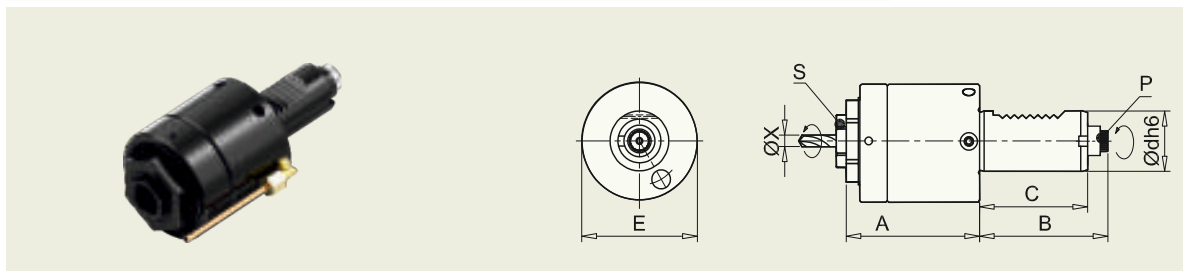
CODE	Ødh6	A	B	C	E	F	G	H	ØX	i	N _{max} RPM	S (DIN 6499)	T Nm	P	SUITS FOR
SD5901	16	65	42	32	21	25	21	21	1-7	1:1	6000	ER11	6.3	W8X0.8X30°X18-9b	DRIVEN TOOL DISC VDI Ø16 BORE
SD6002	20	94	51	40	30	30	27	28	1-13	1:1	6000	ER20	10	W10X0.8X30°X11-9b	DRIVEN TOOL DISC VDI Ø20 BORE
SD6106	30	94	67	55	30	30	30	28	1-13	1:1	6000	ER20	40	W16X0.8X30°X18-9b	DRIVEN TOOL DISC VDI Ø30 BORE
SD6111	30	98.5	67	55	30	30	30	28	1-16	1:1	6000	ER25	40	W16X0.8X30°X18-9b	DRIVEN TOOL DISC VDI Ø30 BORE
SD6207	40	123	75	63	41	41	43	40	1-20	1:1	5000	ER32	70	W20X0.8X30°X24-9b	DRIVEN TOOL DISC VDI Ø40 BORE

AXIAL TOOL HEAD - ROUND - EXT NUT



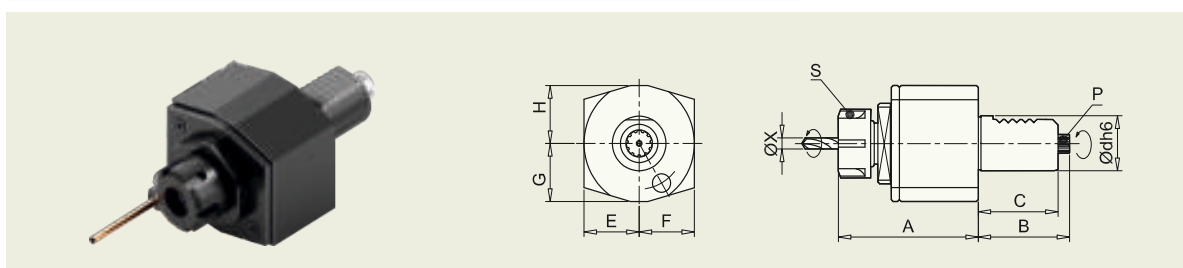
CODE	Ødh6	A	B	C	E	ØX	i	N _{max} RPM	S (DIN 6499)	T Nm	P	SUITS FOR
SD6122	30	99.5	67	55	68	1-16	1:1	6000	ER25	40	W16X0.8X30°X18-9b	DRIVEN TOOL DISC VDI Ø30 BORE
SD6224	40	120.5	75	63	83	1-20	1:1	5000	ER32	70	W20X0.8X30°X24-9b	DRIVEN TOOL DISC VDI Ø40 BORE

AXIAL TOOL HEAD - ROUND - INT NUT



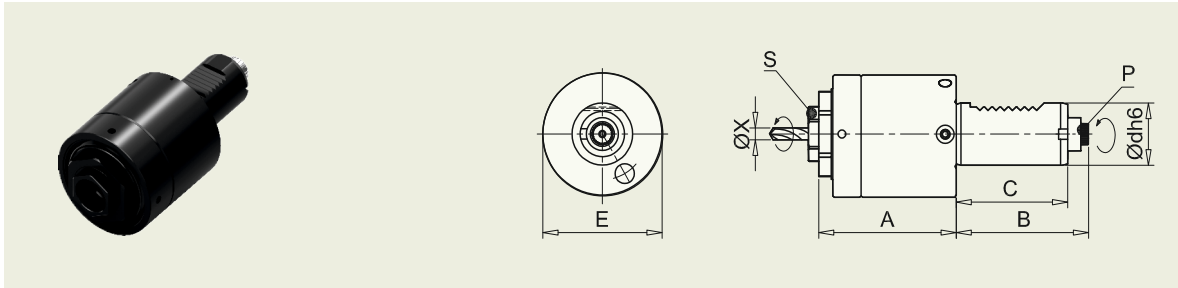
CODE	Ødh6	A	B	C	E	ØX	i	N _{max} RPM	S (DIN 6499)	T Nm	P	SUITS FOR
SD6117	30	80	67	55	68	1-16	1:1	6000	ER25	40	W16X0.8X30°X18-9b	DRIVEN TOOL DISC VDI Ø30 BORE
SD6226	40	95	75	63	83	1-20	1:1	5000	ER32	70	W20X0.8X30°X24-9b	DRIVEN TOOL DISC VDI Ø40 BORE

AXIAL TOOL HEAD - SHORT



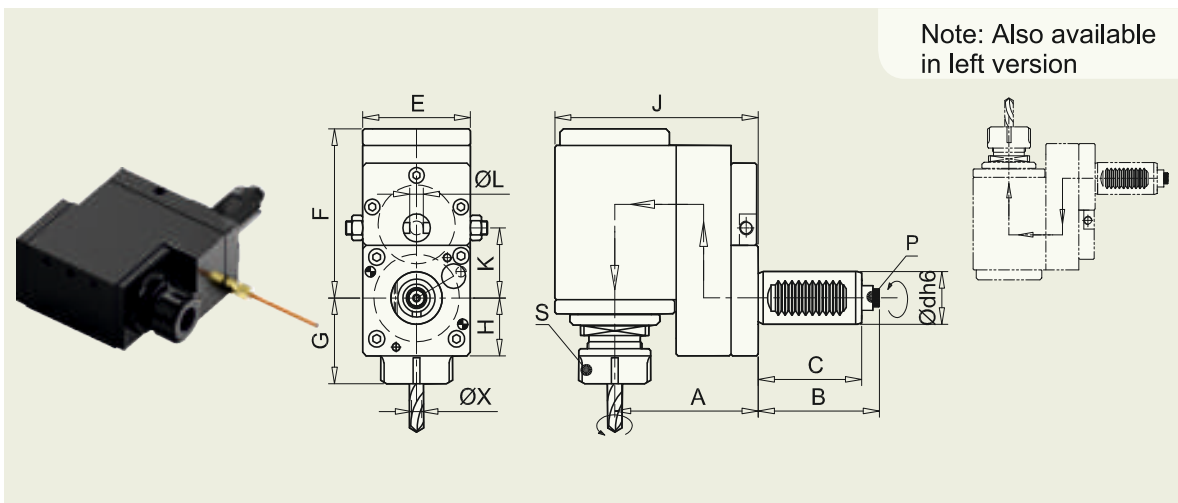
CODE	Ødh6	A	B	C	E	F	G	H	ØX	i	S (DIN 6499)	N _{max} RPM	T Nm	P	SUITS FOR
SD6004	20	76	51	40	31	31	35	28	1-10	1:1	4000	ER16	10	W10X0.8X30°X11-9b	DRIVEN TOOL DISC VDI Ø20 BORE

AXIAL TOOL HEAD - INT NUT-THROUGH COOLANT



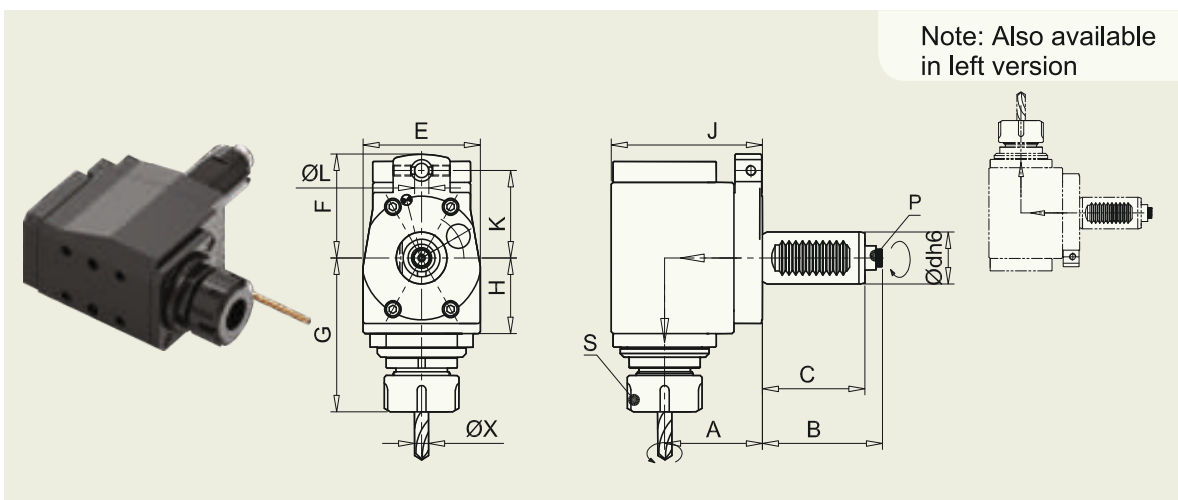
CODE	Ødh6	A	B	C	E	ØX	i	N _{max} RPM	S (DIN 6499)	T Nm	P	SUITS FOR
SD6136	30	80	67	55	68	1-16	1:1	6000	ER25	40	W16X0.8X30°X18-9b	DRIVEN TOOL DISC VDI Ø30 BORE
SD6232	40	95	75	63	83	1-20	1:1	5000	ER32	70	W20X0.8X30°X24-9b	DRIVEN TOOL DISC VDI Ø40 BORE

RADIAL TOOL HEAD



CODE	Ødh6	A	B	C	E	F	G	H	J	K	ØL	ØX	i	N _{max} RPM (DIN 6499)	S (DIN 6499)	T Nm	VERSION	P	SUITS FOR
SD6007	20	57	51	40	50	70	49	33	119	40	8	1-16	1:1	6000	ER25	10	R	W10X0.8X30°X11-9b	DRIVEN TOOL DISC VDI Ø20 BORE
SD6132	30	89	67	55	63	96.5	49	33	124	48	8	1-16	1:1	6000	ER25	40	R	W16X0.8X30°X18-9b	DRIVEN TOOL DISC VDI Ø30 BORE
SD6231	40	98	75	63	80	108.5	43	43	138	56	10	1-20	1:1	5000	ER32	70	R	W20X0.8X30°X24-9b	DRIVEN TOOL DISC VDI Ø40 BORE

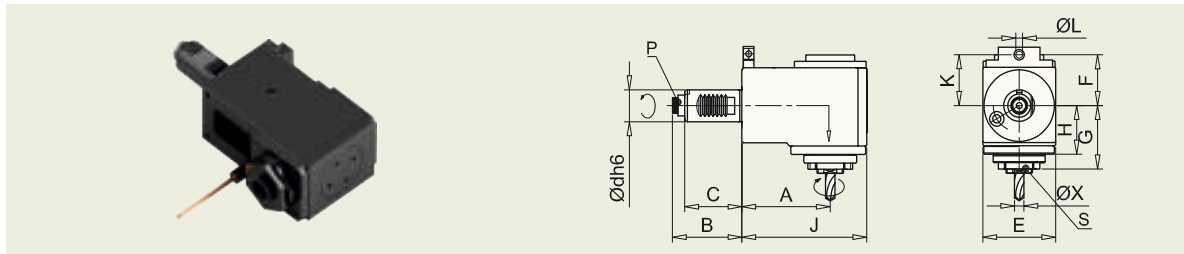
RADIAL TOOL HEAD - DIRECT



CODE	Ødh6	A	B	C	E	F	G	H	J	K	ØL	ØX	i	S (DIN 6499)	N _{max} RPM	T Nm	VERSION	P	SUITS FOR
SD5902	16	34	42	32	42	61	46	25	50	54	8	1-7	1:1	6000	ER11	6.3	R	W8X0.8X30°X18-9b	DRIVEN TOOL DISC VDI Ø16 BORE
SD6130	30	55	67	55	66	53	84.5	41.5	85	48	8	1-16	1:1	6000	ER25	40	R	W16X0.8X30°X18-9b	DRIVEN TOOL DISC VDI Ø30 BORE
SD6221	40	64	75	63	76	69	90	43	98	56	10	1-20	1:1	5000	ER32	70	R	W20X0.8X30°X24-9b	DRIVEN TOOL DISC VDI Ø40 BORE

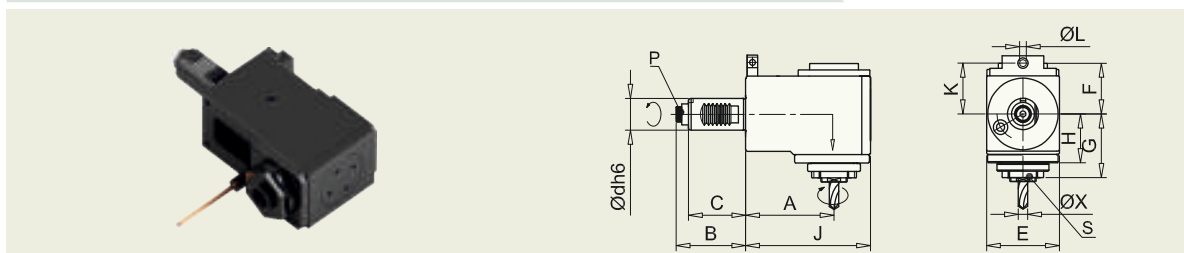
AXIAL TOOL HEAD - FOR RADIAL DISC

SINGLE END



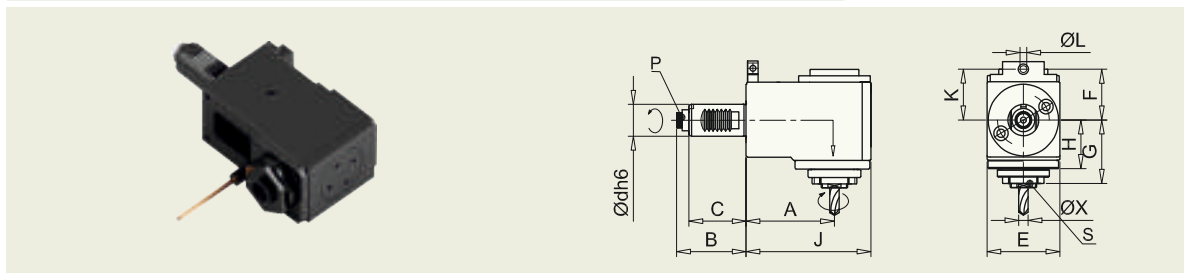
CODE	Ødh6	A	B	C	E	F	G	H	J	K	ØL	ØX	i	N _{max} RPM	S (DIN 6499)	T Nm	VERSION	P	SUITS FOR
SD6114	30	85	67	55	70	49.5	64.5	45.5	120	48	8	1-16	1:1	6000	ER25	40	R	W16X0.8X30°X18-9b	DRIVEN TOOL DISC VDI 030 BORE
SD6214	40	100	75	63	76	54	74.5	53	144	56	10	1-20	1:1	5000	ER32	70	R	W20X0.8X30°X24-9b	DRIVEN TOOL DISC VDI 040 BORE

SINGLE END - THROUGH COOLANT



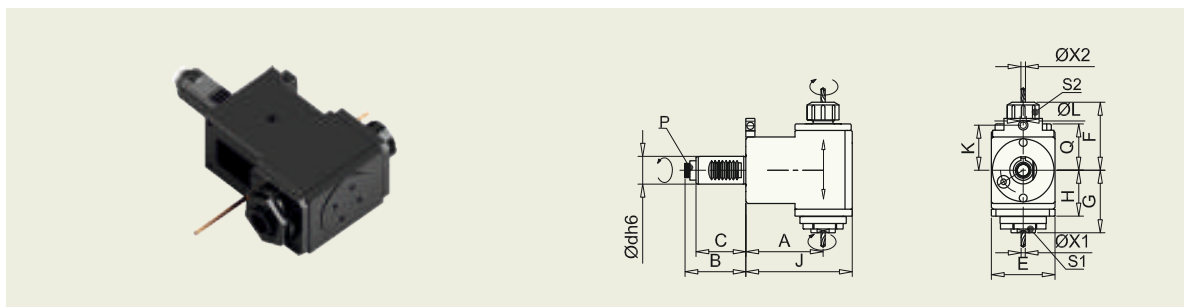
CODE	Ødh6	A	B	C	E	F	G	H	J	K	ØL	ØX	i	N _{max} RPM	S (DIN 6499)	T Nm	VERSION	P	SUITS FOR
SD6135	30	85	67	55	70	58.5	64.5	45.5	120	48	8	1-16	1:1	6000	ER25	40	R	W16X0.8X30°X18-9b	DRIVEN TOOL DISC VDI 030 BORE
SD6230	40	100	75	63	76	64.5	74.5	53	144	56	10	1-20	1:1	5000	ER32	70	R	W20X0.8X30°X24-9b	DRIVEN TOOL DISC VDI 040 BORE

SINGLE END - DOUBLE SERRATION



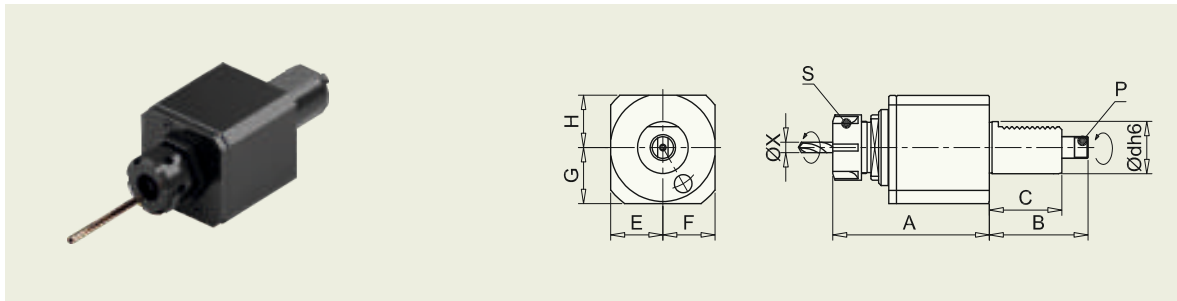
CODE	Ødh6	A	B	C	E	F	G	H	J	K	ØL	ØX	i	N _{max} RPM	S (DIN 6499)	T Nm	VERSION	P	SUITS FOR
SD6133	30	100	67	55	62	49.5	64.5	45.5	132	48	8	1-16	1:1	6000	ER25	40	R	W16X0.8X30°X18-9b	DRIVEN TOOL DISC VDI 030 BORE

DOUBLE END



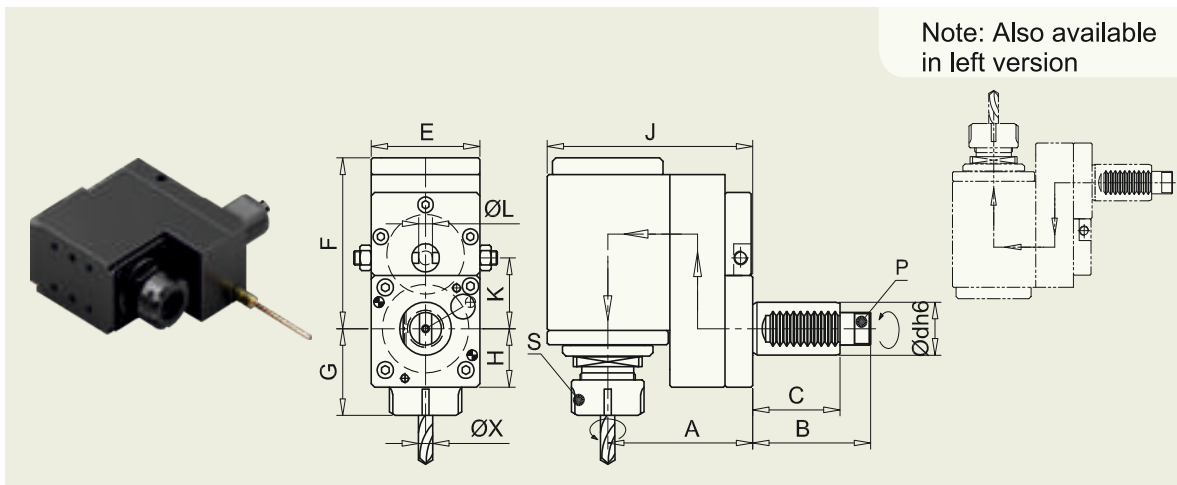
CODE	Ødh6	A	B	C	E	F	G	H	J	K	Q	ØL	ØX1	ØX2	S1 (DIN 6499)	S2 (DIN 6499)	i	N _{max} RPM	T Nm	P	SUITS FOR
SD6125	30	85	67	55	70	75.5	68.5	49.5	117	48	50	8	1-16	1-13	ER25	ER20	1:1	6000	40	W16X0.8X30°X18-9b	DRIVEN TOOL DISC VDI 030 BORE
SD6129	30	100	67	55	62	75.5	68.5	49.5	132	48	50	8	1-16	1-13	ER25	ER20	1:1	6000	40	W16X0.8X30°X18-9b	DRIVEN TOOL DISC VDI 030 BORE
SD6219	40	100	75	63	76	78.5	74.5	53	141	56	53	10	1-20	1-13	ER32	ER20	1:1	5000	70	W20X0.8X30°X24-9b	DRIVEN TOOL DISC VDI 040 BORE
SD6229	40	120	75	63	76	78.5	74.5	53	161	56	53	10	1-20	1-13	ER32	ER20	1:1	5000	70	W20X0.8X30°X24-9b	DRIVEN TOOL DISC VDI 040 BORE

AXIAL TOOL HEAD



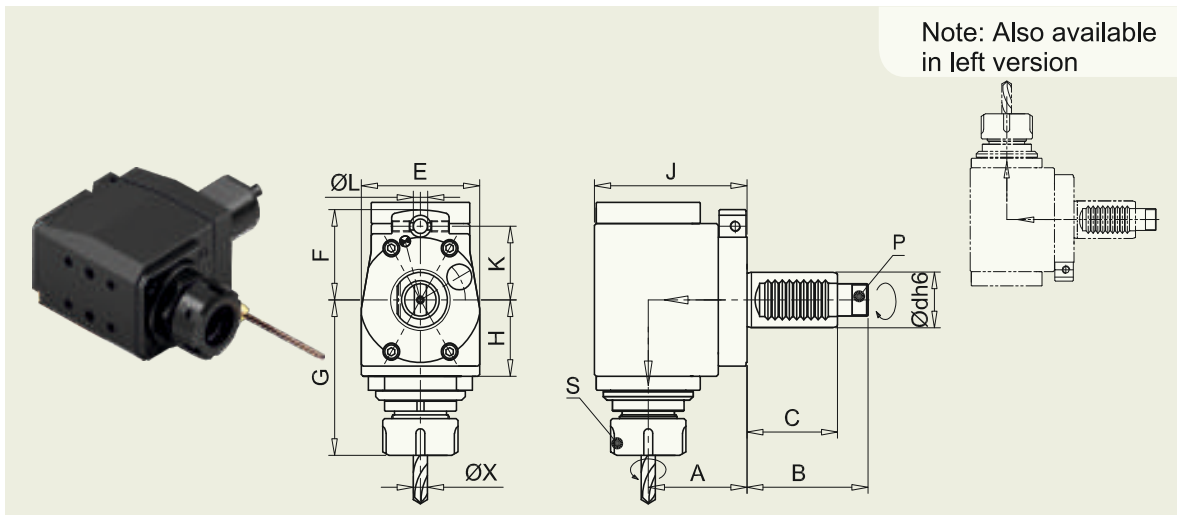
CODE	Ødh6	A	B	C	E	F	G	H	ØX	i	N _{max} RPM	S (DIN 6499)	T N _m	P	SUITS FOR
SD6144	30	94	62	50.5	30	30	30	28	1-13	1:1	6000	ER20	40	Ø12X6X7	DIPLOMATIC TURRET
SD6124	30	98.5	62	50.5	30	30	30	28	1-16	1:1	6000	ER25	40	Ø12X6X7	DIPLOMATIC TURRET
SD6137	30	98.5	66.5	55	30	30	30	28	1-16	1:1	6000	ER25	40	Ø13.5X8X7	EWS TURRET
SD6236	40	123	72	56	41	41	43	40	1-20	1:1	5000	ER32	70	Ø14X8X6.5	DIPLOMATIC TURRET

RADIAL TOOL HEAD



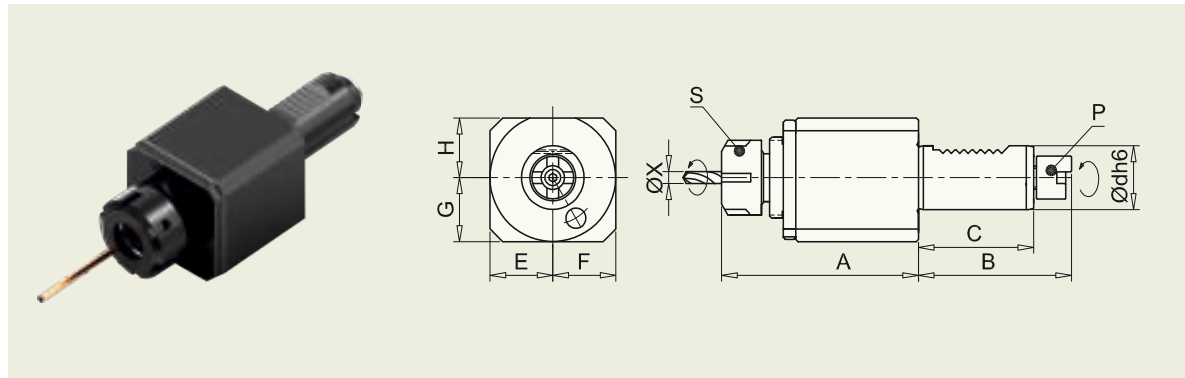
CODE	Ødh6	A	B	C	E	F	G	H	J	K	ØL	ØX	i	N _{max} RPM	S (DIN 6499)	T N _m	VERSION	P	SUITS FOR
SD6108	30	84	62	50.5	63	96.5	49	33	119	40	8	1-16	1:1	6000	ER25	40	R	Ø12X6X7	DIPLOMATIC TURRET
SD6141	30	84	66.5	55	63	96.5	49	33	119	40	8	1-16	1:1	6000	ER25	40	R	Ø13.5X8X7	EWS TURRET
SD6212	40	91	72	56	80	106.5	43	43	131	63	10	1-20	1:1	5000	ER32	70	R	Ø14X8X6.5	DIPLOMATIC TURRET

RADIAL TOOL HEAD - DIRECT



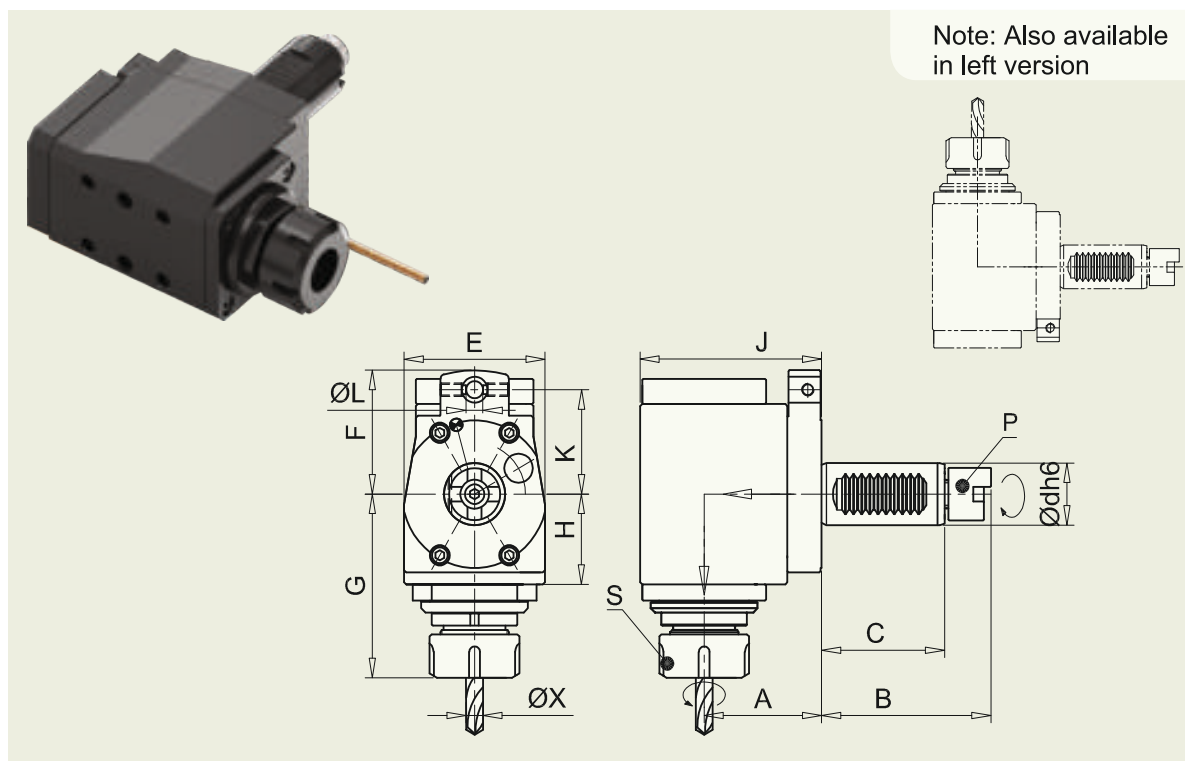
CODE	Ødh6	A	B	C	E	F	G	H	J	K	ØL	ØX	i	N _{max} RPM	S (DIN 6499)	T N _m	VERSION	P	SUITS FOR
SD6142	30	55	62	50.5	66	53	84.5	41.5	85	40	8	1-16	1:1	6000	ER25	40	R	Ø12X6X7	DIPLOMATIC TURRET

AXIAL TOOL HEAD



CODE	Ødh6	A	B	C	E	F	G	H	ØX	i	N ^{max} RPM	S (DIN 6499)	T Nm	P	SUITS FOR
SD5903	16	65	48	35	21	25	21	21	1-7	1:1	6000	ER11	6.3	Ø14.5X4X4	BARUFFALDI TURRET
SD6143	30	98.5	59	45	30	30	30	28	1-16	1:1	6000	ER25	40	Ø24X6X3.2	BARUFFALDI TURRET

RADIAL TOOL HEAD - DIRECT



CODE	Ødh6	A	B	C	E	F	G	H	J	K	ØL	ØX	i	N ^{max} RPM	S (DIN 6499)	T Nm	VERSION	P	SUITS FOR
SD5904	16	34	48	35	42	61	46	25	50	54	8	1-7	1:1	6000	ER11	6.3	R	Ø14.5X4X4	BARUFFALDI TURRET

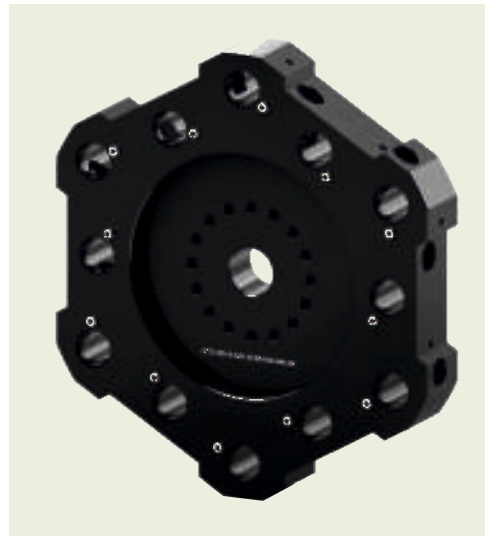
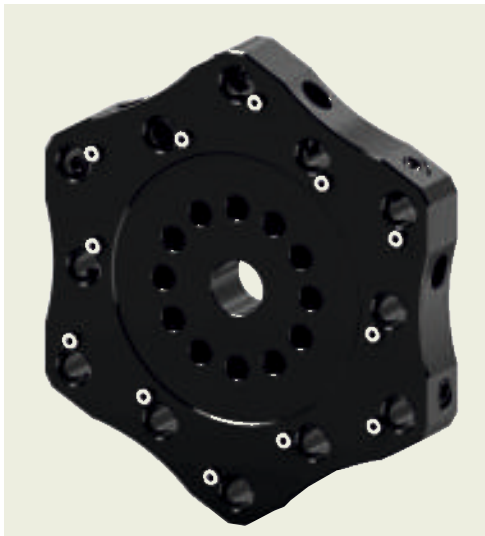
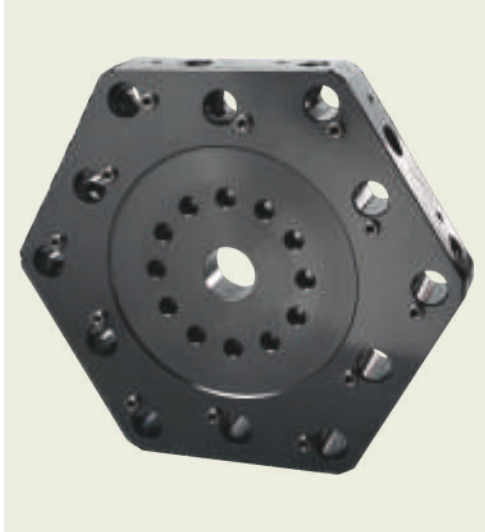
CUSTOMISED DRIVEN TOOL HOLDER

Apart from DIN 5482, 5480, 1809 & TOEM coupling we can make

Driven Tool Holders for other types of drive end coupling

Customer needs to provide drive end coupling details.

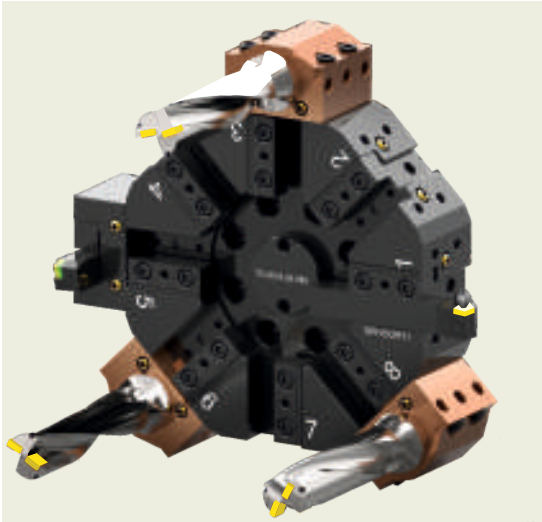
CUSTOM DESIGNED TOOL DISCS



CUSTOM DESIGNED TOOL HOLDERS



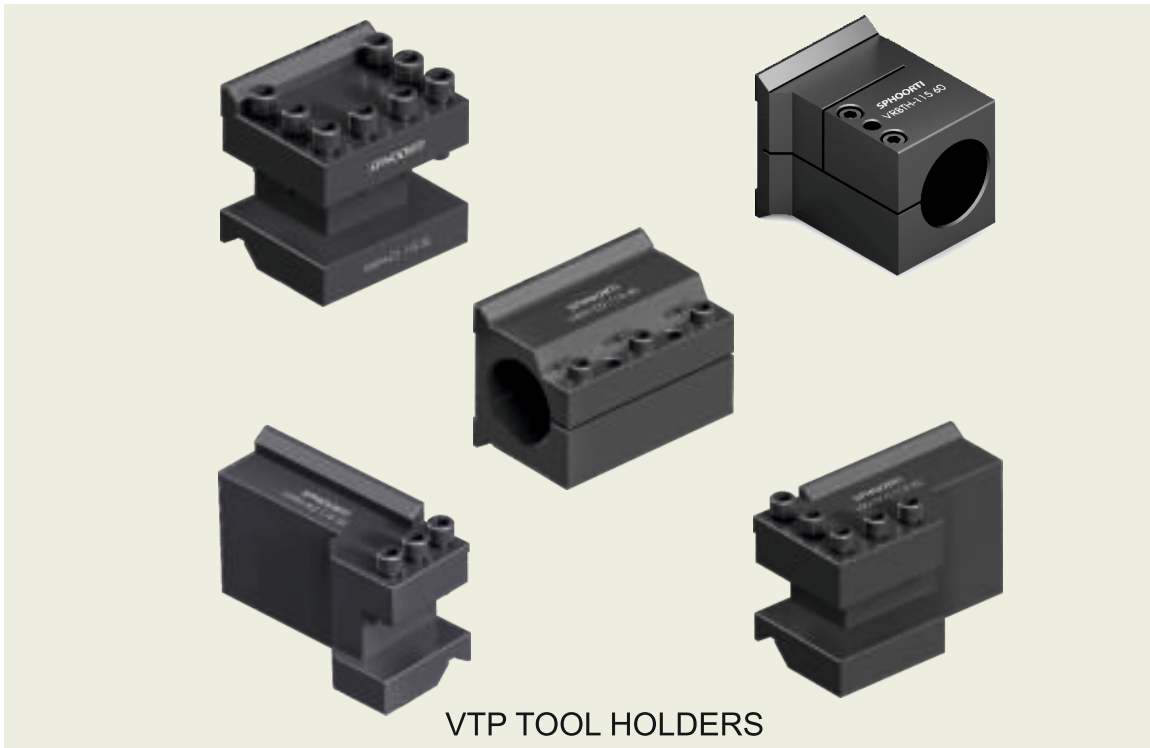
OUR OTHER PRODUCTS



SLOTTED TOOL DISC & HOLDERS



BMT TOOL DISC & HOLDERS



VTP TOOL HOLDERS



SPHOORTI

Precision Assured

Sphoorti Machine Tools Pvt. Ltd.
18, Plot No. 467 - 469, 12th Cross, IV Phase
Peenya Industrial Area, Bangalore - 560 058. INDIA.
Ph. : +91 80 4127 2768, Fax : +91 80 4117 1589
E-mail : info@sphoorti.com
URL : <http://www.sphoorti.com>