

SPHOORTI

Precision Assured

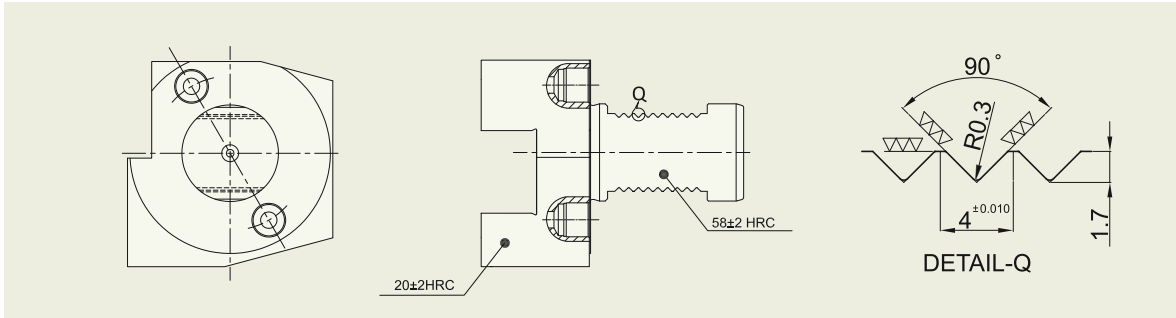
DOUBLE SERRATION THROUGH COOLANT VDI TOOL HOLDERS

FOR CNC TURNING CENTERS & TURN MILL CENTERS



VDI TECHNOLOGY

The VDI system is a quick change clamping systems for each tool holder within the tool disc. Tool changes can therefore be performed within seconds, rather than minutes as with the traditional block system.

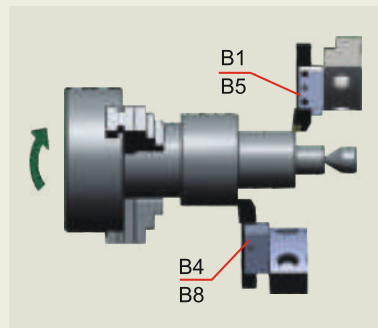


FEATURES

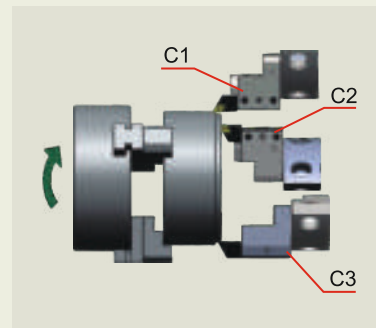
- VDI shank is manufactured as per DIN 69880.
- Tool holders are made by toughened steel C-45.
- VDI shank is double serrated.
- Available with external and internal through coolant system.
- Usable for both Right and Left version tool discs.
- Shank portion is heat treated to 58±2 HRC, and the teeth are ground.
- Tool holders are fully blackened.

SELECTION OF VDI TOOL HOLDERS

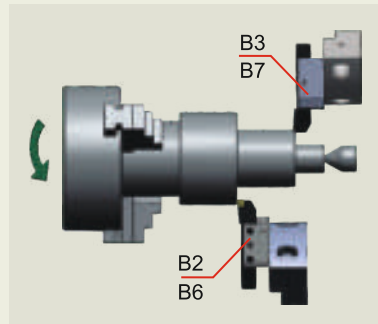
Spindle Rotation clockwise
application of OD Turn and Face



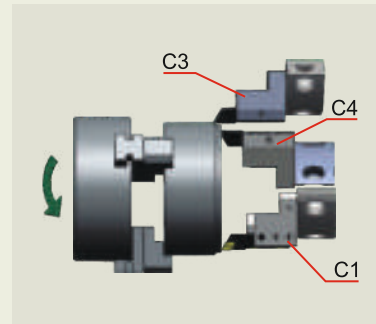
Spindle Rotation clockwise
application of Face and ID Bore



Spindle Rotation Anticlockwise
application of OD Turn and Face



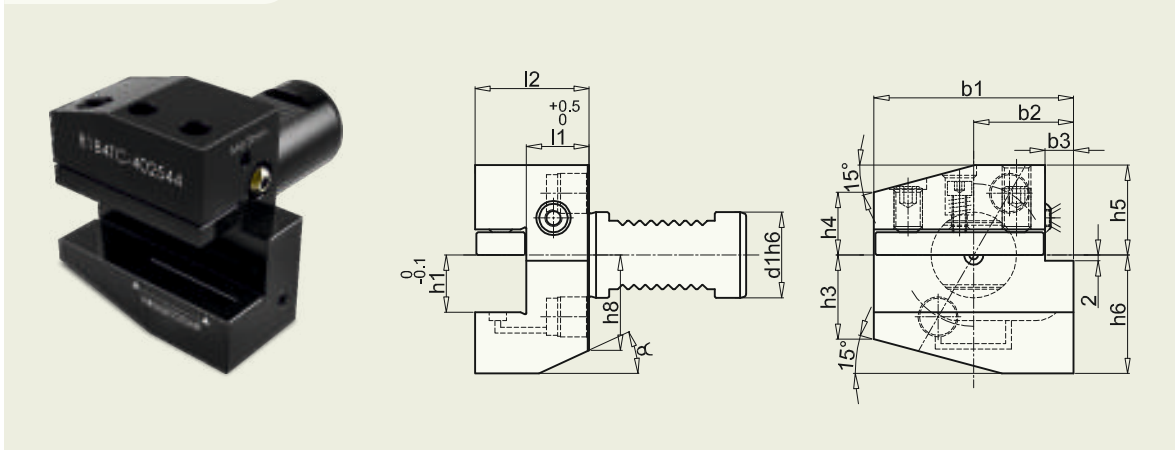
Spindle Rotation Anticlockwise
application of Face and ID Bore



RIGHT & LEFT HAND SHORT - RADIAL

TC-THROUGH COOLANT

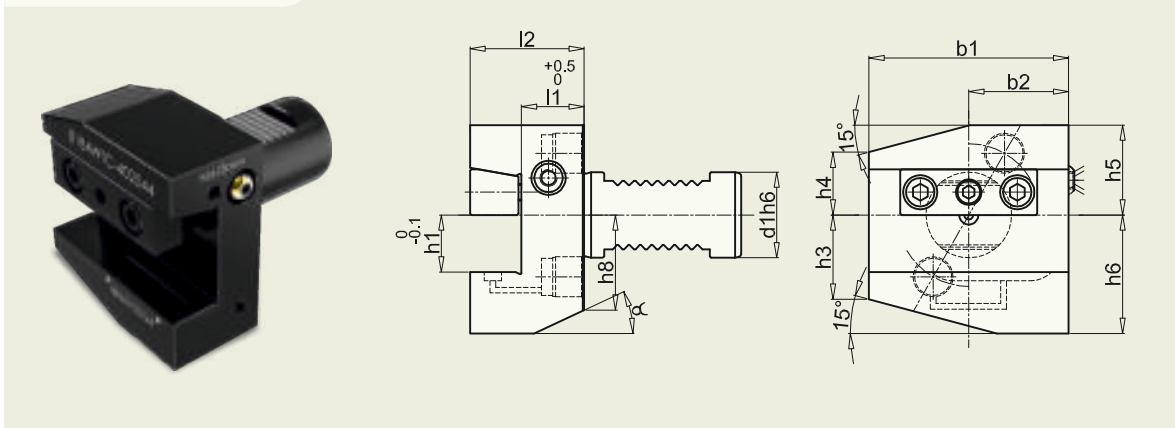
FORM B1B4TC



CODE	d1	b1	b2	b3	h1	h3	h4	h5	h6	h8	l1	l2	α
B1B4TC-302040	30	70	35	10	20/16	29.5	22	31.5	41.5	30	22	40	25°
B1B4TC-402544	40	85	42.5	12.5	25/20	35	30	38	48	-	22	44	-
B1B4TC-502544	50	85	42.5	12.5	25/20	43	30	43	48	-	22	44	-

RIGHT & LEFT HAND SHORT - RADIAL WTC-WEDGE TYPE THROUGH COOLANT

FORM B1B4WTC

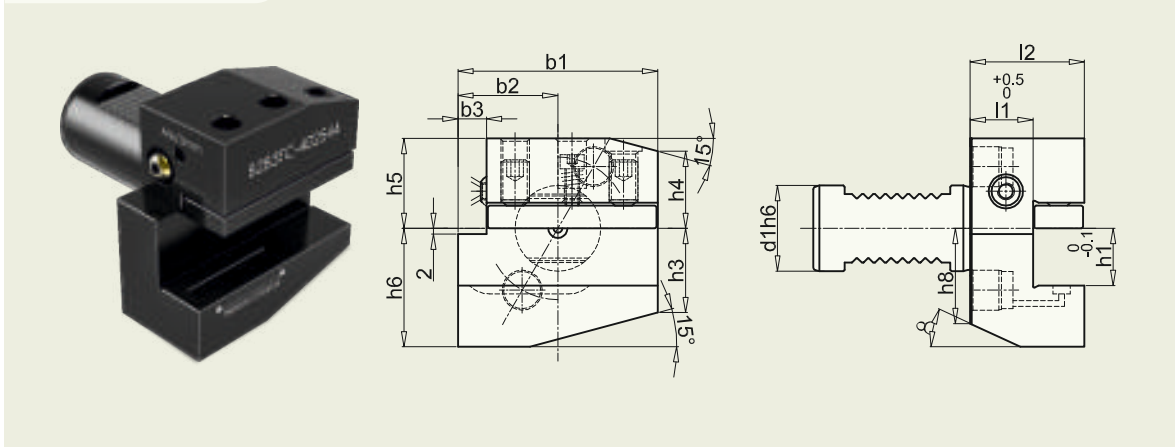


CODE	d1	b1	b2	b3	h1	h3	h4	h5	h6	h8	l1	l2	α
B1B4WTC-302040	30	70	35	-	20/16	29.5	22	31.5	41.5	30	22	40	25°
B1B4WTC-402544	40	85	42.5	-	25/20	35	30	38	48	-	22	44	-
B1B4WTC-502544	50	85	42.5	-	25/20	43	30	43	48	-	22	44	-

LEFT & RIGHT HAND SHORT - RADIAL

TC-THROUGH COOLANT

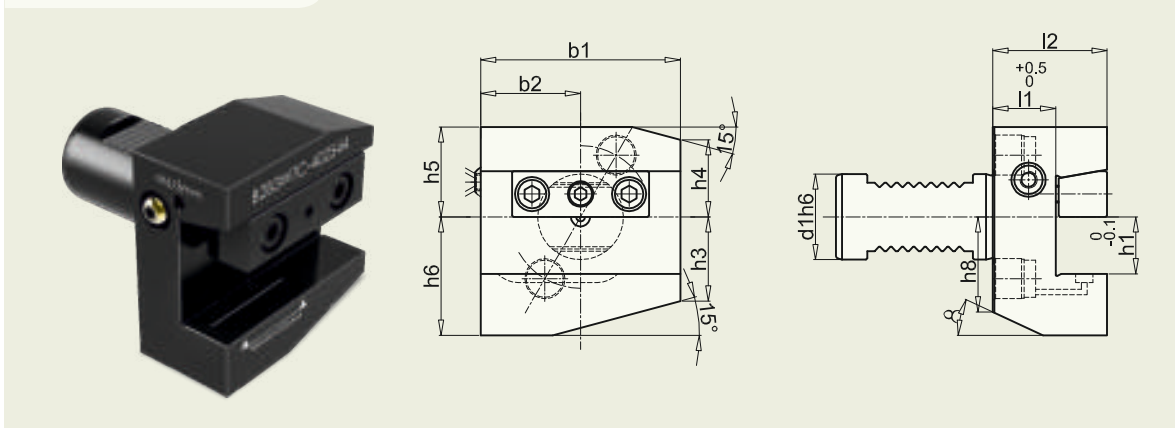
FORM B2B3TC



CODE	d1	b1	b2	b3	h1	h3	h4	h5	h6	h8	l1	l2	α
B2B3TC-302040	30	70	35	10	20/16	29.5	27	31.5	41.5	30	22	40	25°
B2B3TC-402544	40	85	42.5	12.5	25/20	35	30	38	48	-	22	44	-
B2B3TC-502544	50	85	42.5	12.5	25/20	43	38	43	48	-	22	44	-

LEFT & RIGHT HAND SHORT - RADIAL WTC-WEDGE TYPE THROUGH COOLANT

FORM B2B3WTC



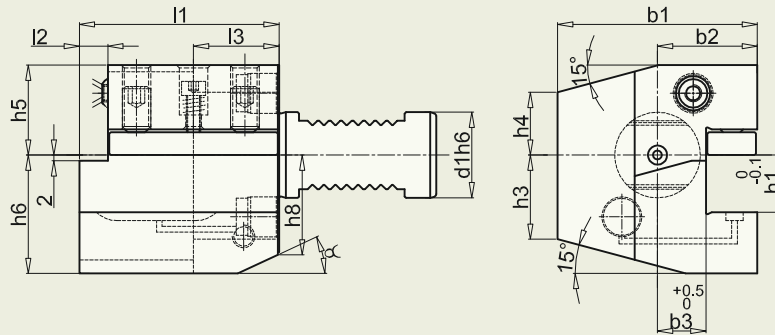
CODE	d1	b1	b2	b3	h1	h3	h4	h5	h6	h8	l1	l2	α
B2B3WTC-302040	30	70	35	-	20/16	29.5	27	31.5	41.5	30	22	40	25°
B2B3WTC-402544	40	85	42.5	-	25/20	35	30	38	48	-	22	44	-
B2B3WTC-502544	50	85	42.5	-	25/20	35	38	43	48	-	22	44	-

DOUBLE SERRATION TOOL HOLDERS *SPHOORTI* DIN 69880

RIGHT & LEFT HAND - AXIAL

TC-THROUGH COOLANT

FORM C1C4TC

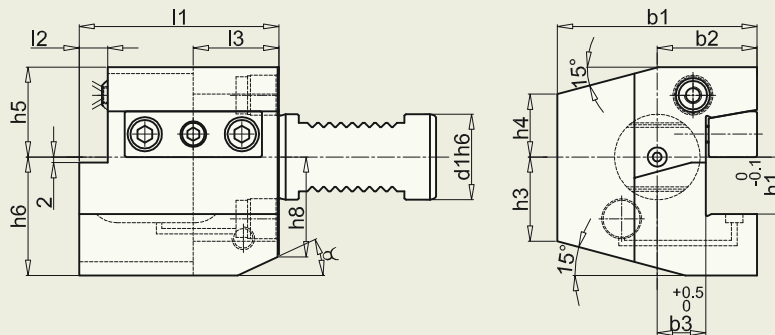


CODE	d1	b1	b2	b3	h1	h3	h4	h5	h6	h8	l1	l2	l3	α
C1C4TC-302070	30	70	35	17	20/16	26	22	32	38	30	70	10	30	25°
C1C4TC-402585	40	85	42.5	21	25/20	35	30	38	48	40	85	12.5	30	15°
C1C4TC-502585	50	90.5	48	26	25/20	42	35	44	48	-	85	12.5	30	-

RIGHT & LEFT HAND - AXIAL

WTC-WEDGE TYPE THROUGH COOLANT

FORM C1C4WTC

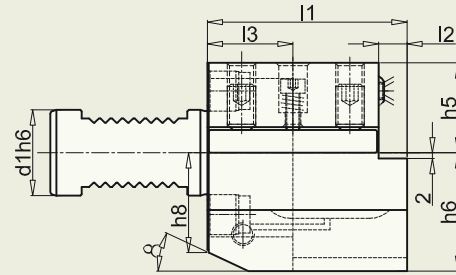
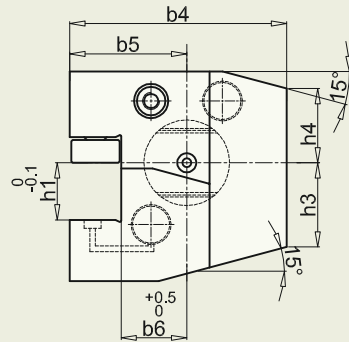


CODE	d1	b1	b2	b3	h1	h3	h4	h5	h6	h8	l1	l2	l3	α
C1C4WTC-302070	30	70	35	17	20/16	26	22	32	38	30	70	10	30	25°
C1C4WTC-402585	40	85	42.5	21	25/20	35	30	38	48	40	85	12.5	30	15°
C1C4WTC-502585	50	90.5	48	26	25/20	42	35	44	48	-	85	12.5	30	-

LEFT & RIGHT HAND - AXIAL

TC-THROUGH COOLANT

FORM C2C3TC

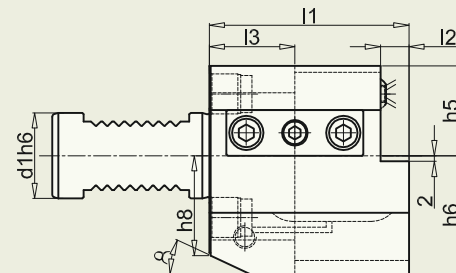
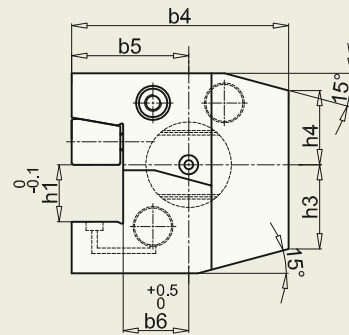


CODE	d1	b4	b5	b6	h1	h3	h4	h5	h6	h8	l1	l2	l3	α
C2C3TC-302070	30	76	41	23	20/16	26	26	32	38	30	70	10	30	25°
C2C3TC-402585	40	90	47.5	25.5	25/20	35	30	38	48	40	85	12.5	30	15°
C2C3TC-502585	50	95	52.5	30.5	25/20	42	37	44	48	-	85	12.5	30	-

LEFT & RIGHT HAND - AXIAL

WTC-WEDGE TYPE THROUGH COOLANT

FORM C2C3WTC

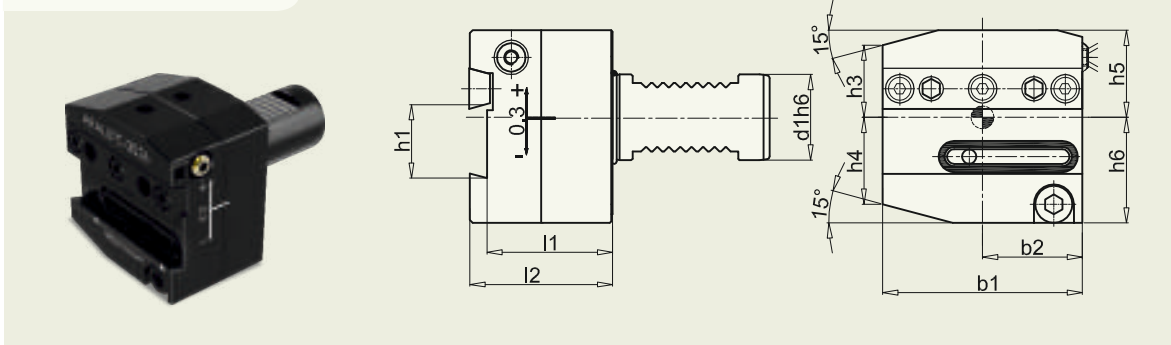


CODE	d1	b4	b5	b6	h1	h3	h4	h5	h6	h8	l1	l2	l3	α
C2C3WTC-302070	30	76	41	23	20/16	26	26	32	38	30	70	10	30	25°
C2C3WTC-402585	40	90	47.5	25.5	25/20	35	30	38	48	40	85	12.5	30	15°
C2C3WTC-502585	50	95	52.5	30.5	25/20	42	37	44	48	-	85	12.5	30	-

CUTOFF TOOL HOLDER

TC-THROUGH COOLANT

FORM ARALUTC

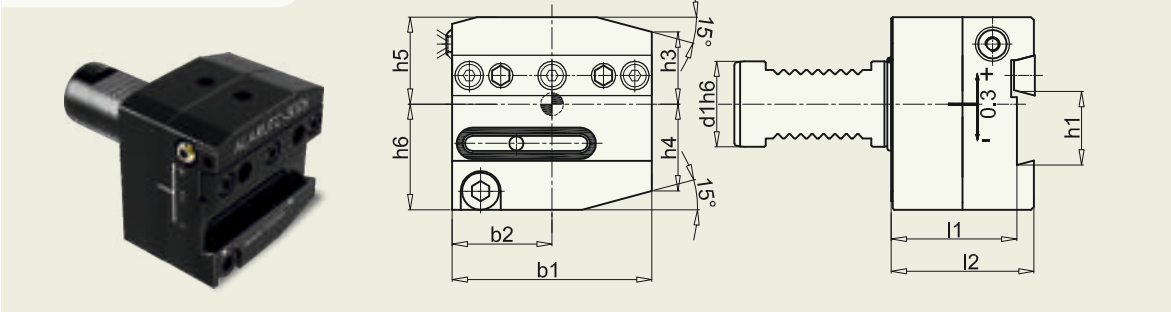


CODE	d1	b1	b2	h1	h3	h4	h5	h6	l1	l2
ARALUTC-3026	30	70	35	26	25	30	32	37	44	50
ARALUTC-3032	30	85	42.5	32	25	30	32	40	44	50
ARALUTC-4026	40	85	42.5	26	31	31	43	40	44	50
ARALUTC-4032	40	85	42.5	32	31	31	43	40	44	50
ARALUTC-5032	50	100	50	32	35	37	43	45	44	50

CUTOFF TOOL HOLDER

TC-THROUGH COOLANT

FORM ALARUTC



CODE	d1	b1	b2	h1	h3	h4	h5	h6	l1	l2
ALARUTC-3026	30	70	35	26	25	30	32	37	44	50
ALARUTC-3032	30	85	42.5	32	25	30	32	40	44	50
ALARUTC-4026	40	85	42.5	26	31	31	43	40	44	50
ALARUTC-4032	40	85	42.5	32	31	31	43	40	44	50
ALARUTC-5032	50	100	50	32	35	37	43	45	44	50

CUSTOM DESIGNED TOOL HOLDERS



SPHOORTI

Precision Assured

Sphoorti Machine Tools Pvt. Ltd.
18, Plot No. 467 - 469, 12th Cross, IV Phase
Peenya Industrial Area, Bangalore - 560 058. INDIA.
Ph. : +91 80 4127 2768, Fax : +91 80 4117 1589
E-mail : info@sphoorti.com
URL : <http://www.sphoorti.com>